

电源插座系列/AC Power Socket Series

朗正电子

电源插座系列/AC Power Socket Series

朗正电子

AC电源插座系列主要技术指标 Specification of AC Power Socket Series

品牌	BRAND NAME	LANZMFG/朗正	产品认证	Certification	CCC/CE/TUV/KC/RoHS
壳体材质	Material(External)	尼龙 Nylon PA66 PC	导体材质	Conduct Material	铜 COPPER
额定负荷	Rating Voltage	250V 10A	温度范围	Temperature Range	-40℃ +70℃
相对湿度	Humidity	93%+40	接触电阻	Contact Resistance	≤0.03Ω
绝缘电阻	Insulation	≥100MΩ	运作力	Actuating Force	5~40N
耐压	Withstand Voltage	AC 500V(50Hz)/min	产品寿命	Lifespan	10000times

二合一插座(品字型+单保险) C14+Single fuse holder (5x20mm)

LZ-14-F1-3P

LZ-14-F2-3P

LZ-14-F1-3PB

LZ-14-F2-3PB

LZ-14-F1-4P

LZ-14-F2-4P

三合一插座(品字型+单保险+开关) C14+Single fuse holder (5x20mm) +Rocker Switch

LZ-14-F3

LZ-14-F5

LZ-14-F3B

LZ-14-F5B

LZ-14-F4

LZ-14-F6

LZ-14-F1S-4P
C14+Single fuse holder

LZ-14-F5R

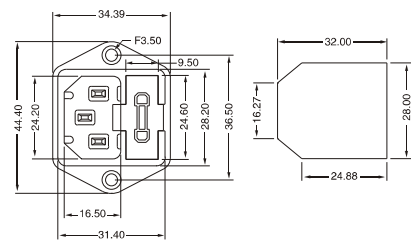
电源插座系列/AC Power Socket Series

朗正电子

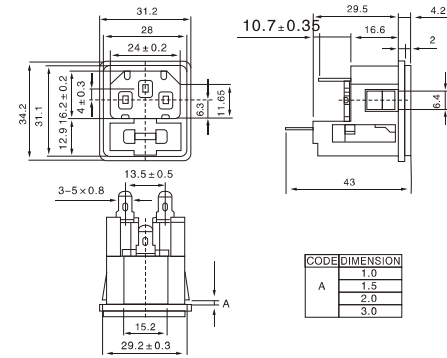
双保险插座 (C14+Double fuse 5x20mm +KCD5 Switch)



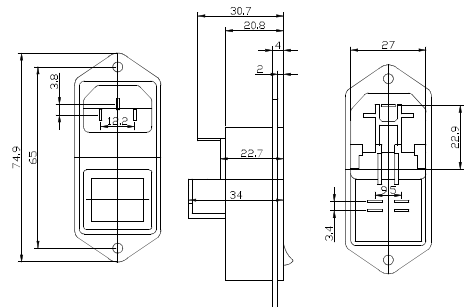
LZ-14-F7
双保险 (C14+Double fuse)



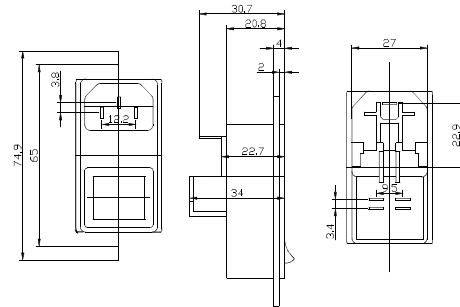
LZ-14-F8
双保险 (C14+Double fuse)



LZ-14-F14
双保险 (C14+Double fuse+KCD5 Switch)



LZ-14-F15
双保险 (C14+Double fuse+KCD5 Switch)



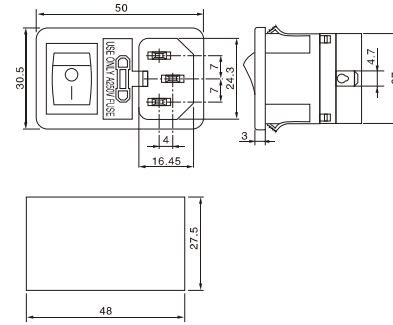
电源插座系列/AC Power Socket Series

朗正电子

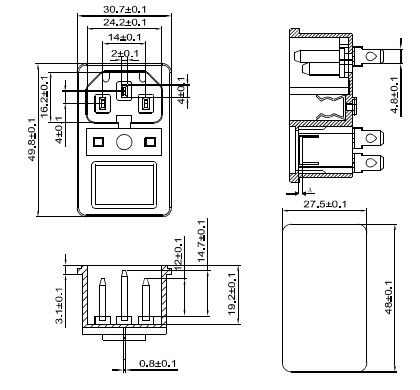
品字型+开关 (C14+Rocker Switch)



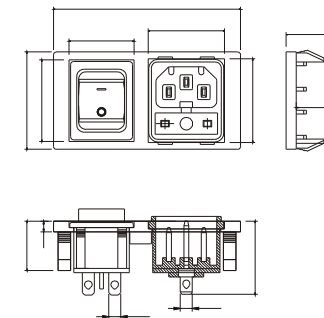
LZ-14-F13
C14+Single fuse+Switch



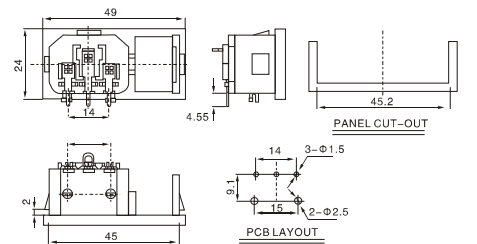
LZ-14-F17
C14+Single fuse+Switch



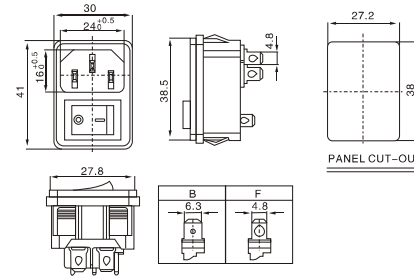
LZ-101



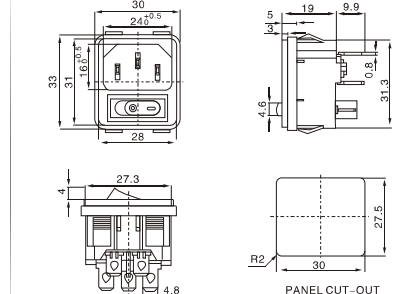
LZ-14-3PRS



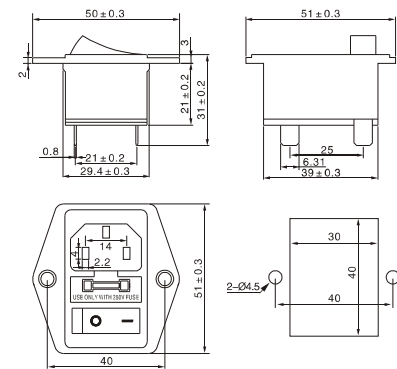
LZ-14-2F-RS



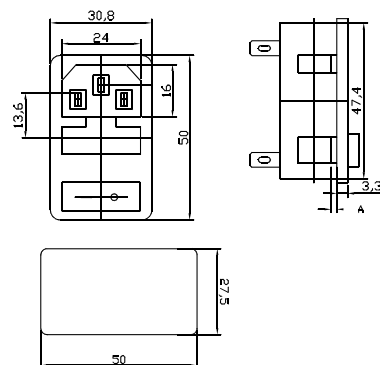
LZ-14-2P-DD+RS



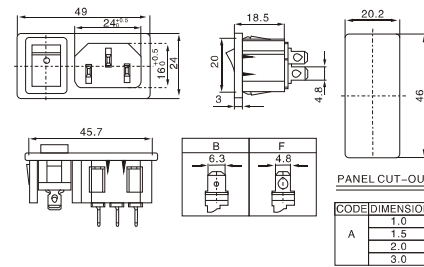
LZ-14-F12



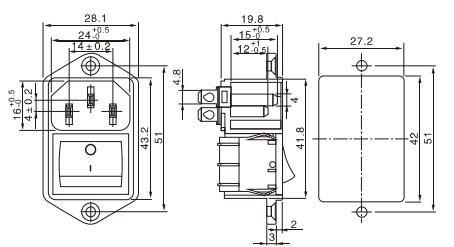
LZ-14-F16



LZ-14-5F+RS



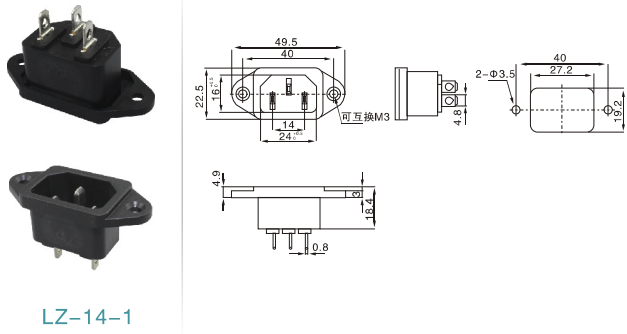
LZ-14-6F



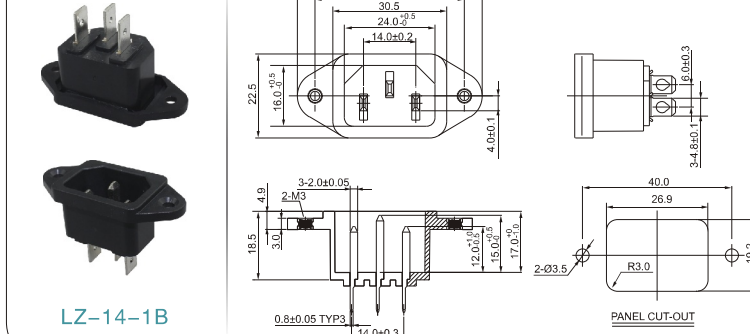
电源插座系列/AC Power Socket Series

朗正电子

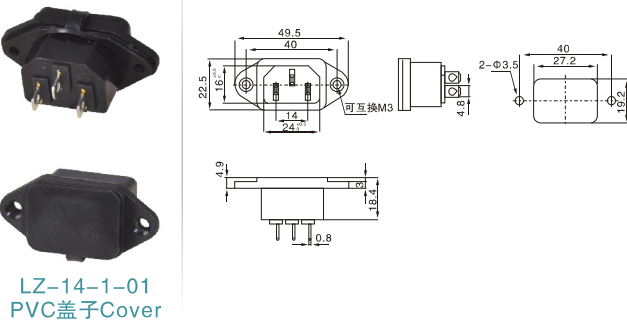
品字插座 C14 Socket



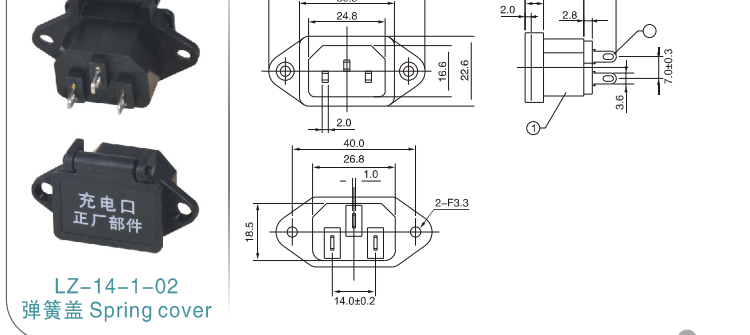
LZ-14-1



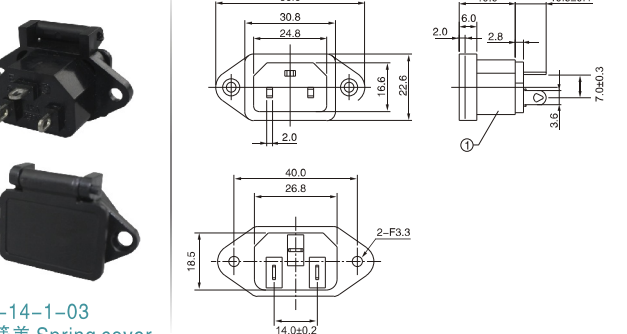
LZ-14-1B



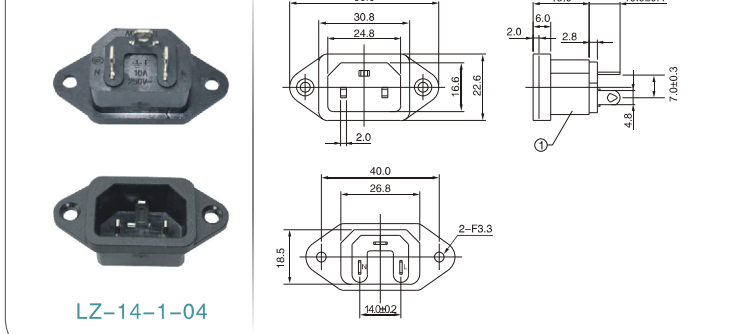
LZ-14-1-01
PVC盖子Cover



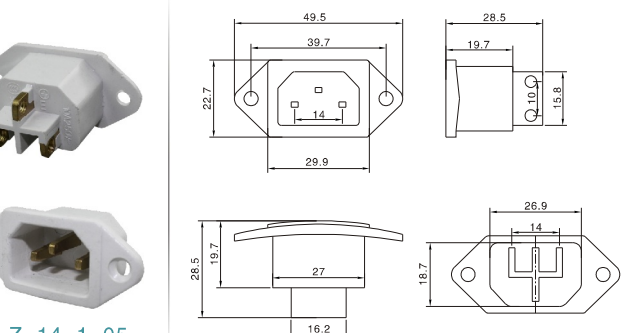
LZ-14-1-02
弹簧盖 Spring cover



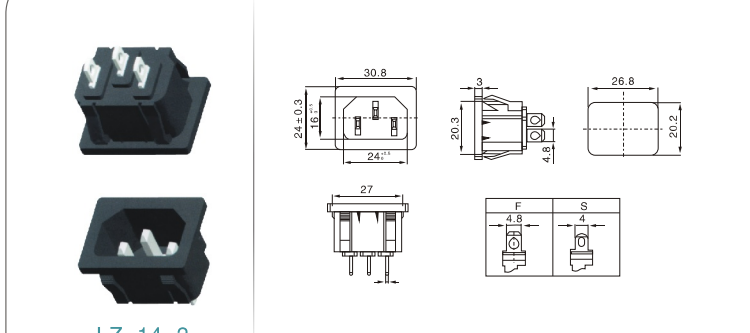
LZ-14-1-03
弹簧盖 Spring cover



LZ-14-1-04



LZ-14-1-05

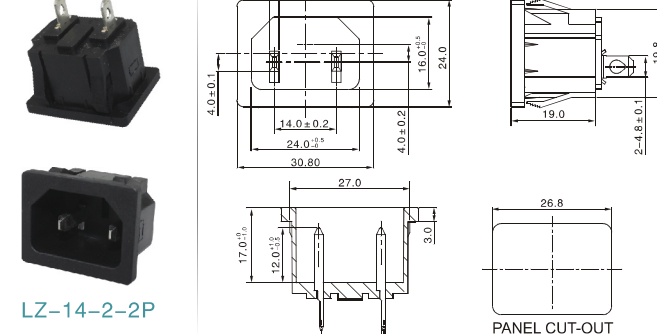


LZ-14-2

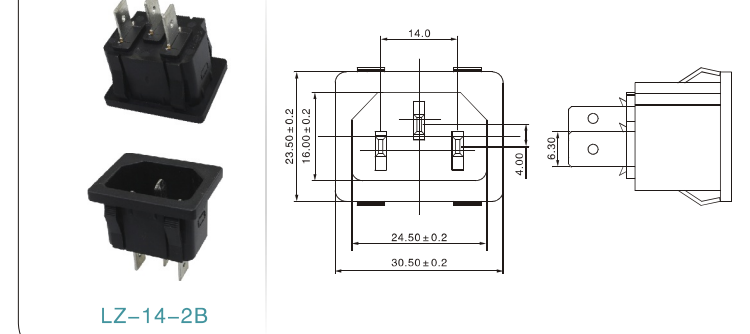
电源插座系列/AC Power Socket Series

朗正电子

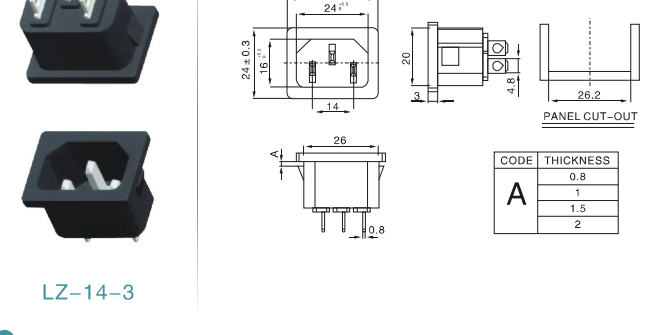
品字插座 C14 Socket



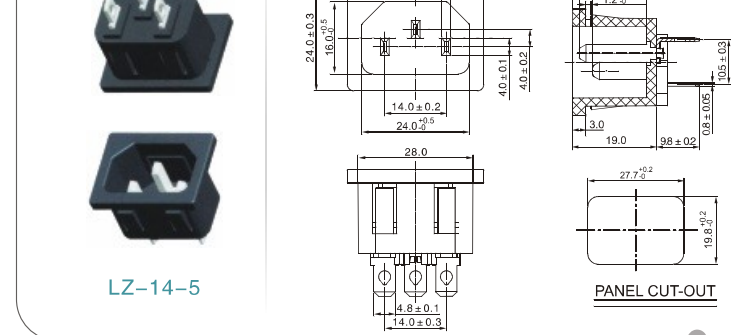
LZ-14-2-2P



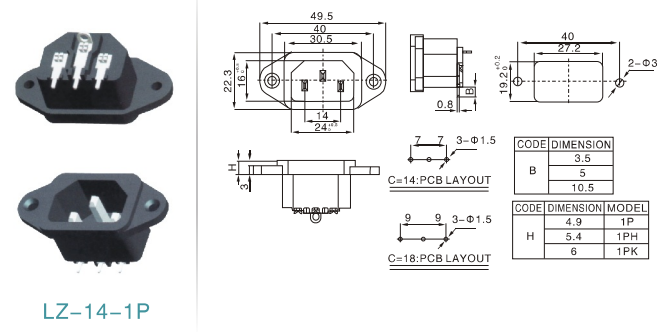
LZ-14-2B



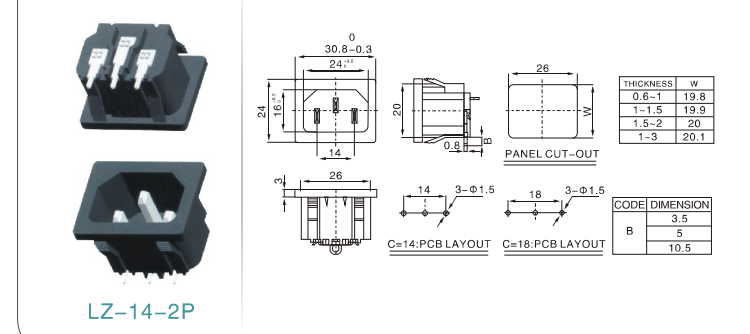
LZ-14-3



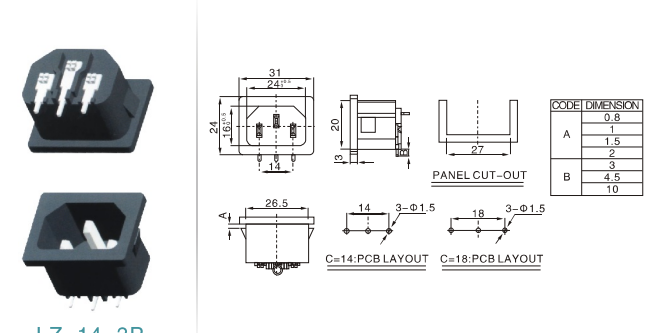
LZ-14-5



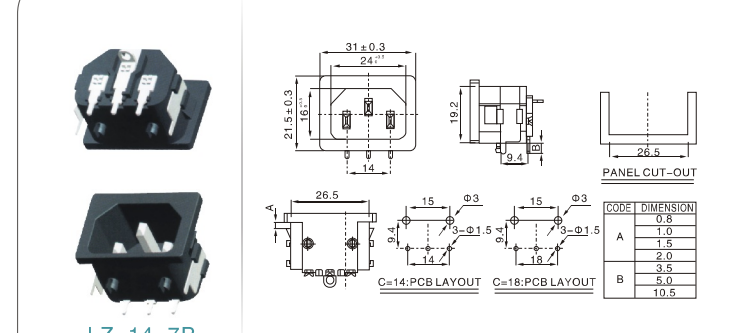
LZ-14-1P



LZ-14-2P



LZ-14-3P

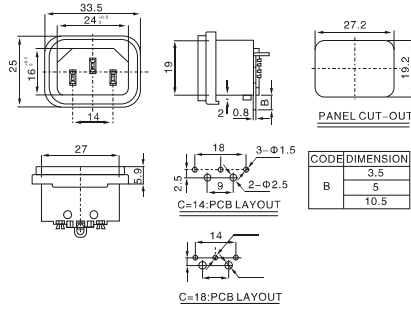


LZ-14-7P

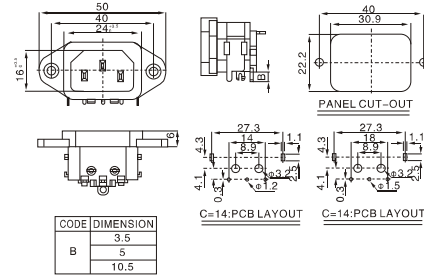
电源插座系列/AC Power Socket Series

朗正电子

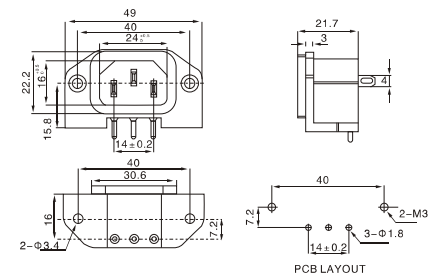
品字插座 C14 Socket



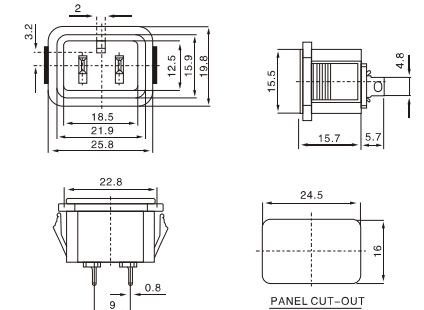
LZ-14-8P



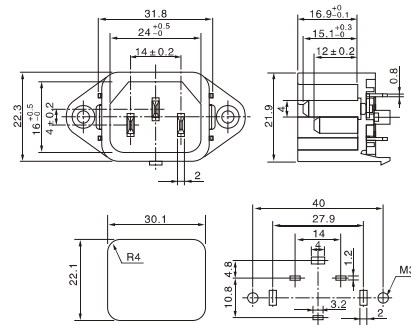
LZ-14-10P



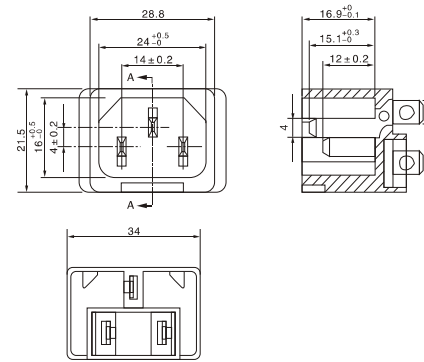
LZ-14-1A



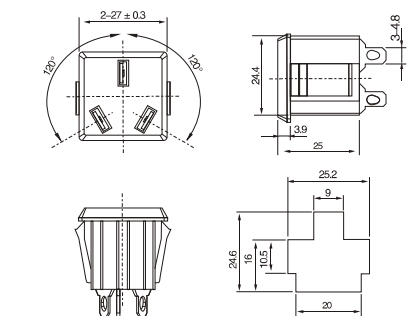
LZ-14-9F1



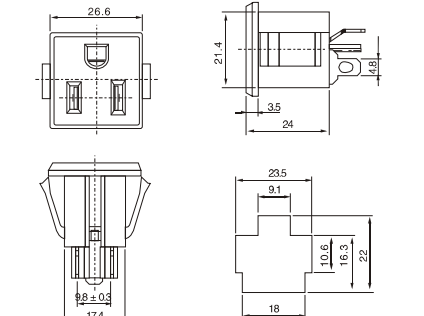
LZ-14-11



LZ-14-12



LZ-F-C
国标Chinese Socket

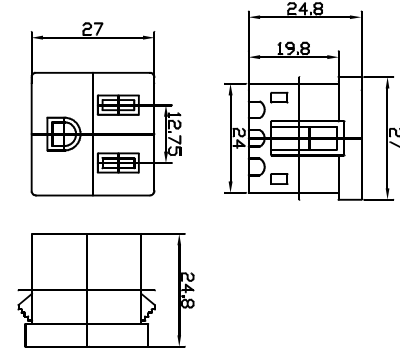


LZ-F-M
美式插座American Socket

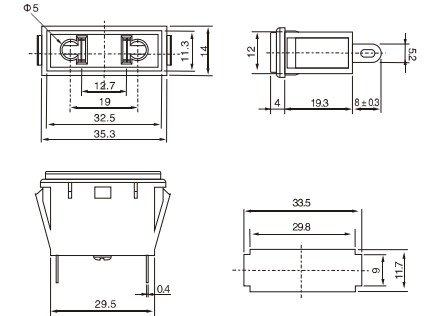
电源插座系列/AC Power Socket Series

朗正电子

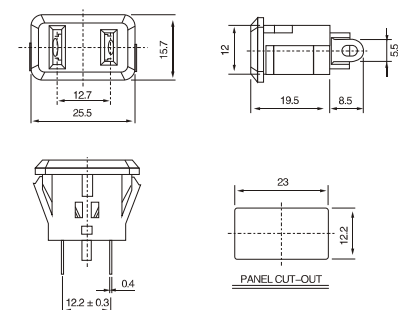
母座 Female Socket



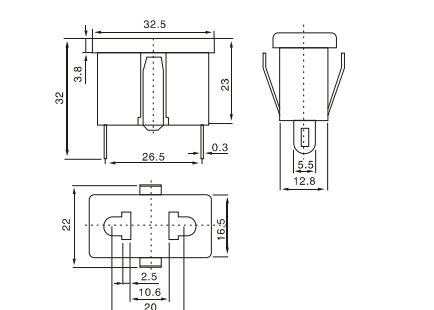
LZ-F-MS



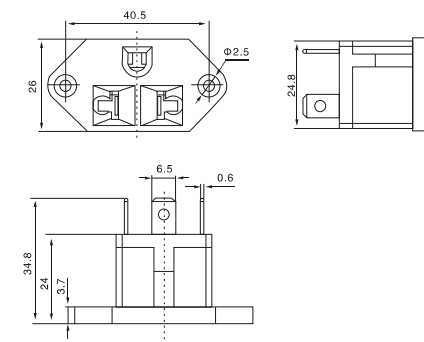
LZ-F-M3



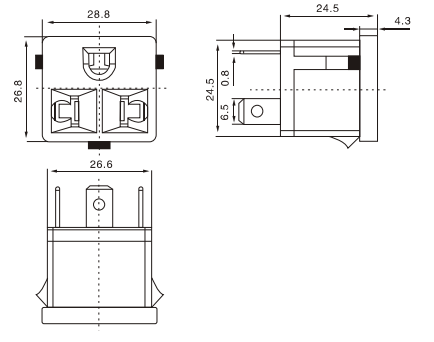
LZ-F-M4



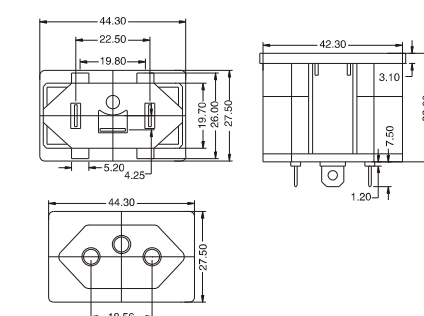
LZ-F-M5



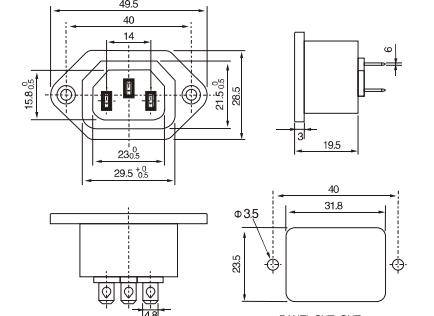
LZ-F-M6
巴西座 Brazil Socket



LZ-F-M7
巴西座 Brazil Socket



LZ-F-M8
巴西座 Brazil Socket



LZ-F-1

AC电源插座系列主要技术指标 Specification of AC Power Socket Series

品牌	BRAND NAME	LANZMFG/朗正	产品认证	Certification	CCC/CE/TUV/KC/RoHS
壳体材质	Material(External)	尼龙 Nylon PA66 PC	导体材质	Conduct Material	铜 COPPER
额定负荷	Rating Voltage	250V 2.5A	温度范围	Temperature Range	-40℃ +70℃
相对湿度	Humidity	93%+40	接触电阻	Contact Resistance	≤0.03Ω
绝缘电阻	Insulation	≥100MΩ	运作力	Actuating Force	5~40N
耐压	Withstand Voltage	AC 500V(50Hz)/min	产品寿命	Lifespan	10000times

梅花插座 C6 Socket

LZ-6-1WP5S1

LZ-6-2P19P6

LZ-6-3S1S1

LZ-6-3TS1S1

LZ-6-4P5P3

LZ-6-5S2S8

八字插座 C8 Socket

LZ-8-6D
正负极

LZ-8-4P8

LZ-8-5P9

LZ-8-5BR1

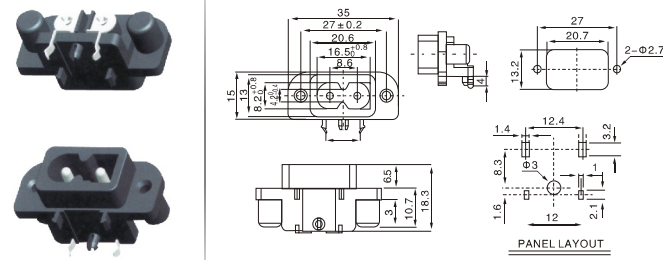
LZ-8-6S1

LZ-8-6BS9

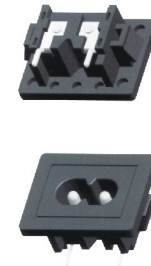
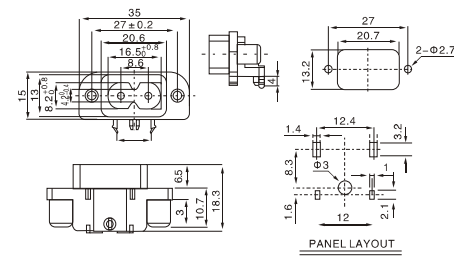
LZ-8-7S1

LZ-8-7-2

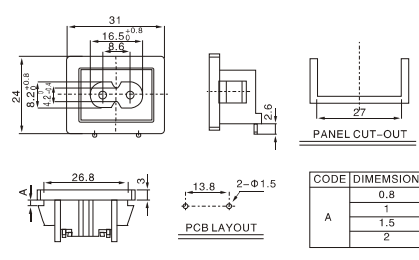
八字插座 C8 Socket



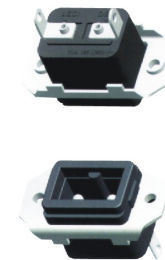
LZ-8-7AP20



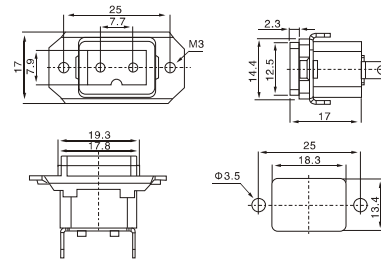
LZ-8-8P22



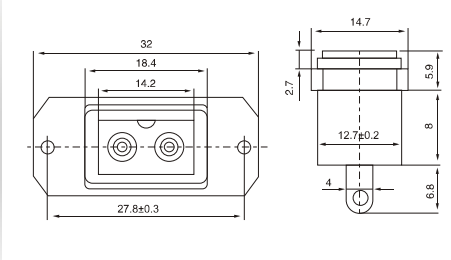
八字插座 C8 Socket



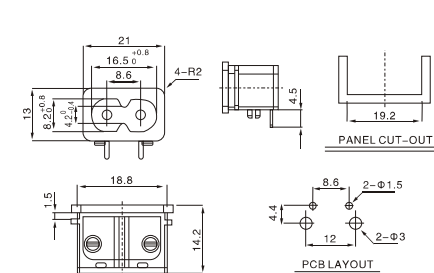
LZ-8-D(T)



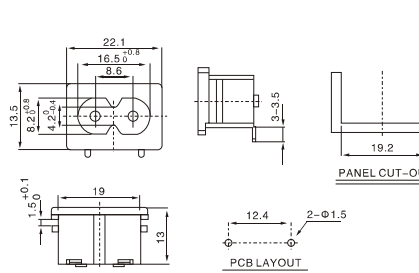
LZ-8-D



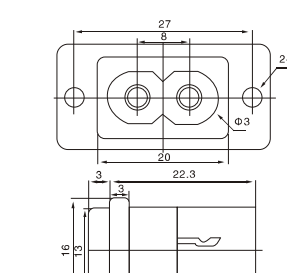
LZ-8-9P9(G)



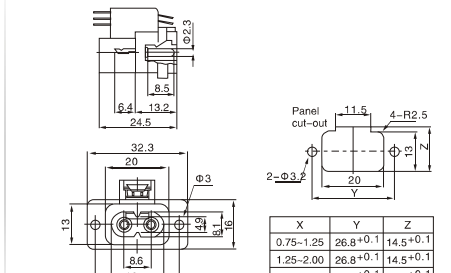
LZ-8-11P23



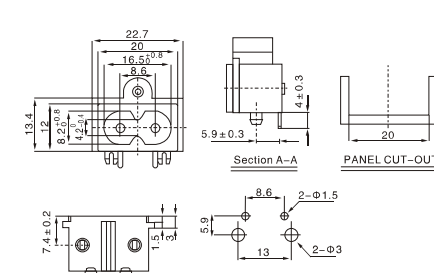
LZ-8-22



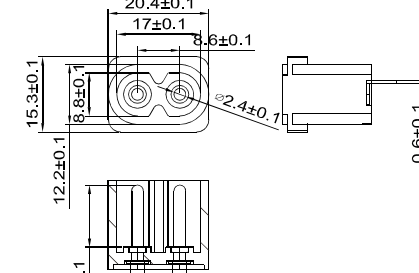
LZ-8-23-3P



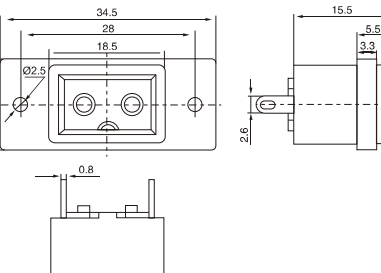
LZ-8-12P9



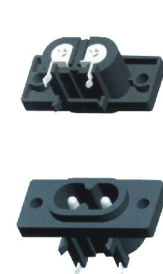
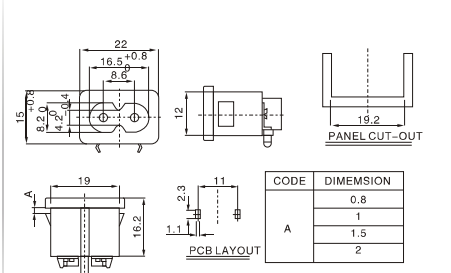
LZ-8-16S1



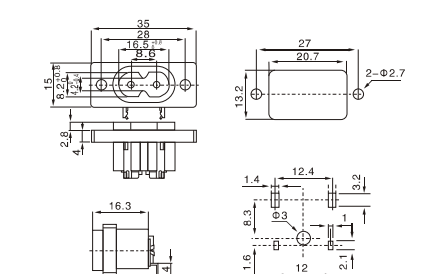
LZ-8-24



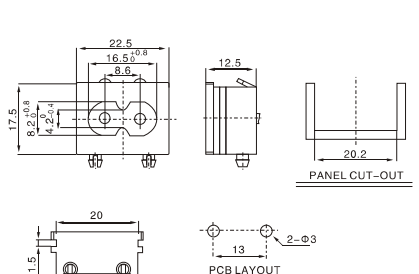
LZ-8-3P10



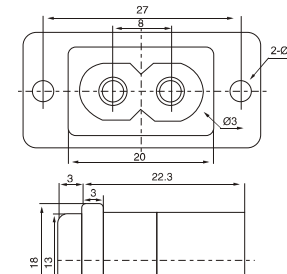
LZ-8-16P20



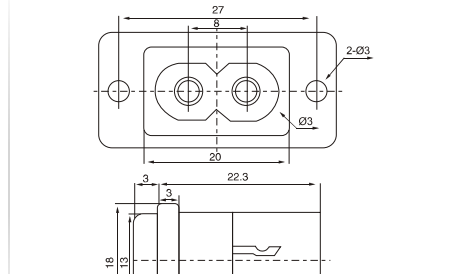
LZ-8-17VS2B



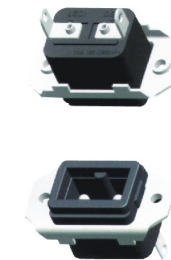
LZ-8-25S



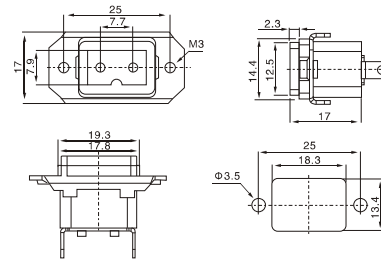
LZ-8-25



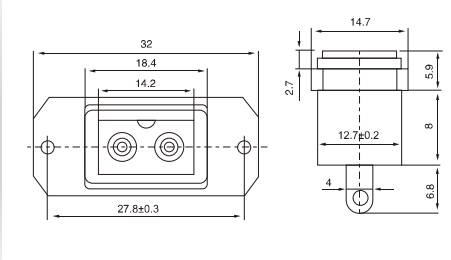
八字插座 C8 Socket



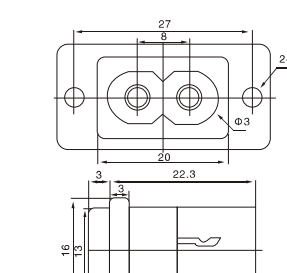
LZ-8-D(T)



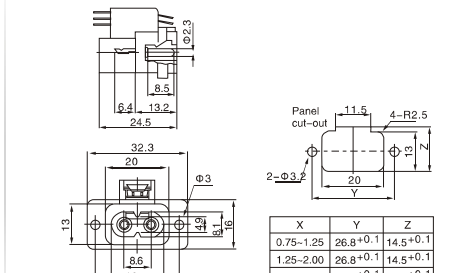
LZ-8-D



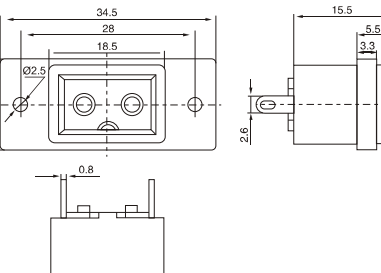
LZ-8-22



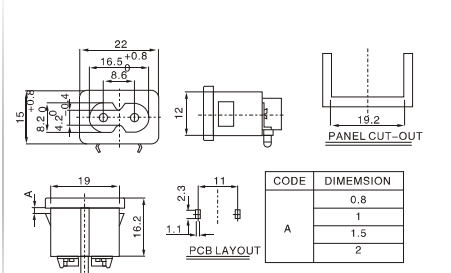
LZ-8-23-3P



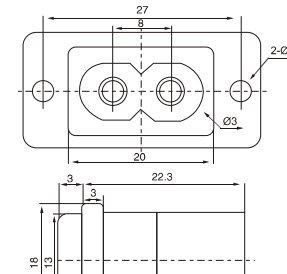
LZ-8-24



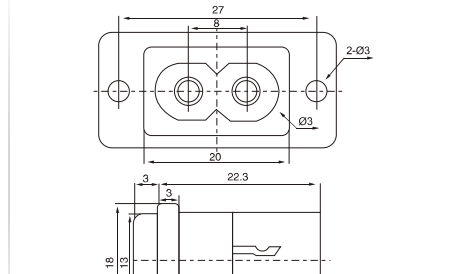
LZ-8-3P10



LZ-8-25S



LZ-8-25



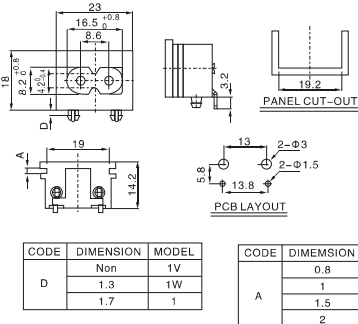
电源插座系列/AC Power Socket Series

朗正电子

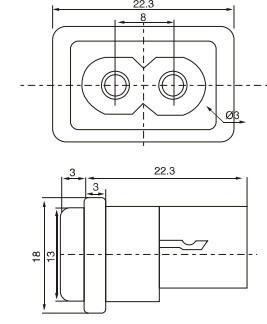
八字插座 C8 Socket



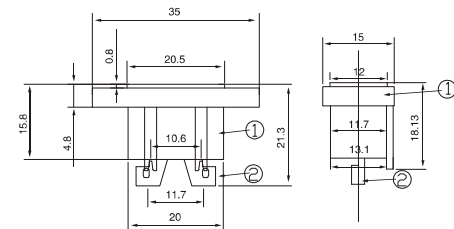
LZ-8-1P2



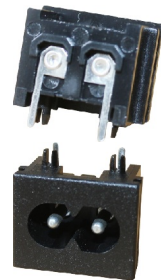
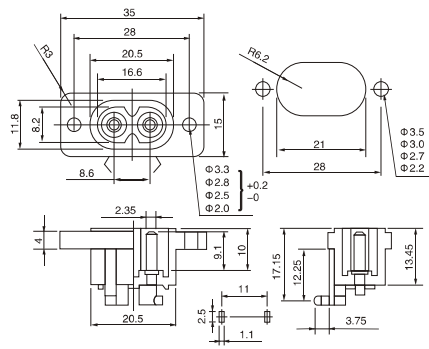
LZ-8-27



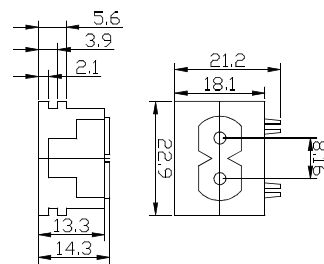
LZ-8-7F



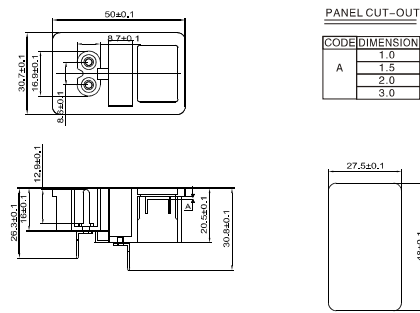
LZ-8-30



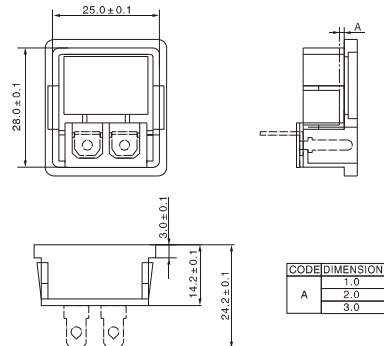
LZ-8-31



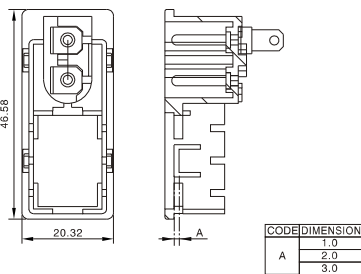
LZ-8-F3
八字插座+开关+保险
C8+Single fuse+Rocker Switch



LZ-8-28
八字插座+开关
C8+Rocker Switch



LZ-8-29
八字插座+开关
C8+Rocker Switch



I.E.C.Requirement

朗正电子

Appliance Connector	Rated Current (amps)	Equipment Class	Maximum Temperature	Connector Outlet/inlet	Appliance Outlet
	0.2	II	70°C	C1/C2	-
	2.5	I	70°C	C5/C6	B
	2.5	II	70°C	C7/C8	D
	6.0	II	70°C	C9/C10	-
	10	I	70°C	C13/C14	F
	10	I	120°C	C15/C16	-
	10	I	155°C	C15A/C16A	-
	10	II	70°C	C17/C18	H
	16	I	70°C	C19/C20	J
	16	I	155°C	C21/C22	-
	16	II	70°C	C23/C24	L

ROCKER SWITCH 船型开关



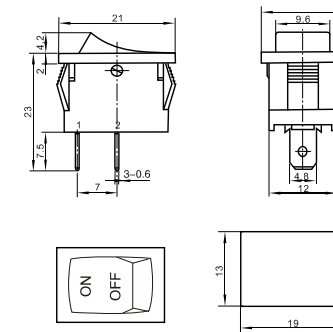
船型开关系列/Rocker Switches Series

船型开关系列主要技术参数 Specification of Rocker Switch Series

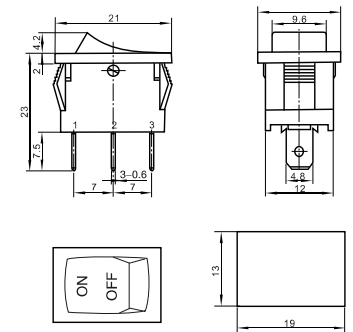
品牌 BRAND NAME	LANZMFG/朗正	耐压 Withstand Resistance	1500VAC for 1Minute
产品认证 Certification	CQC CE KC	环境温度 Environment Temperature	Terminal Side -20℃~+105℃ Actuating side -20℃~+55℃
额定负荷 Rating	3A 6A 10A 15A 20A 25A 220V	运作力 Actuating Force	4-8N
温度范围 Temperature	-10℃ to 55℃	外壳材质 Housing	PA66
机械寿命 Mechanical Lifespan	over 30,000 Cycles	按钮材料 Button	PA66 or ABS
电器寿命 Electrical lifespan	over 10,000 Cycles	触点材质 Contacts	Silver Alloy
接触电阻 Contact Resistance	20mΩ Max	端子材质 Terminal	Brass silver plated
绝缘电阻 Insulation Resistance	100MΩ Min		



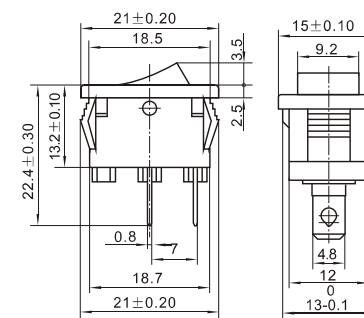
KCD1-101K



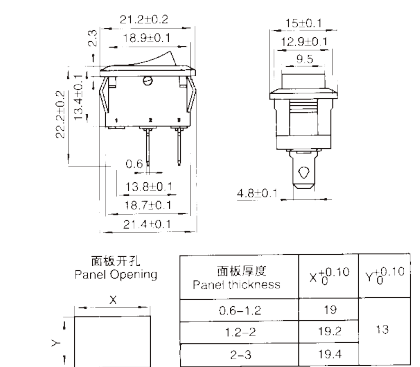
KCD1-101NK



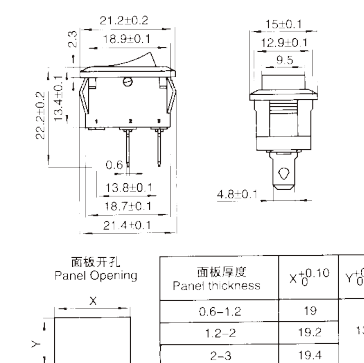
KCD1-101B/2P



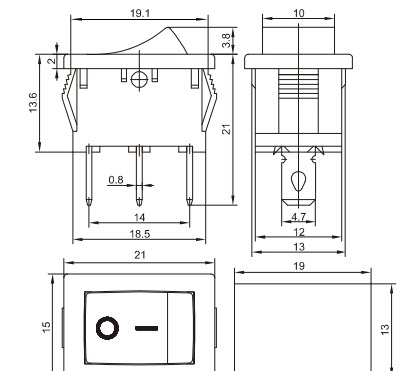
KCD1-101A/2P



KCD1-101BL/2P



KCD1-101B/3P



船型开关系列/Rocker Switches Series

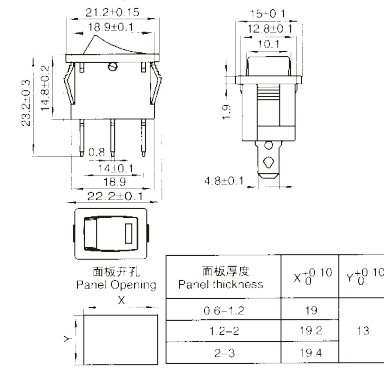
朗正电子

船型开关系列/Rocker Switches Series

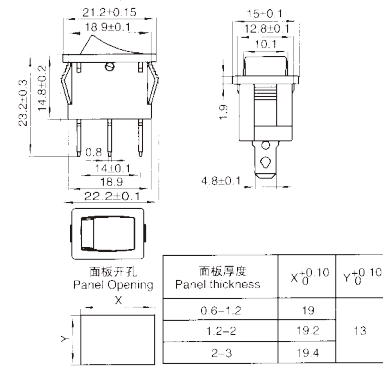
朗正电子



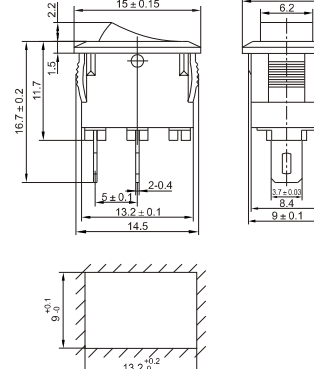
KCD1-101LD



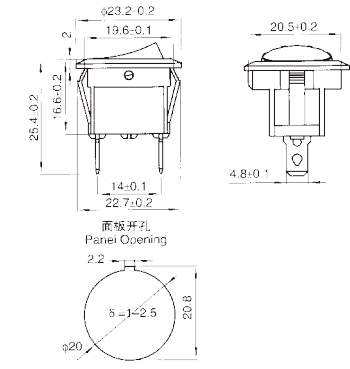
KCD1-101N



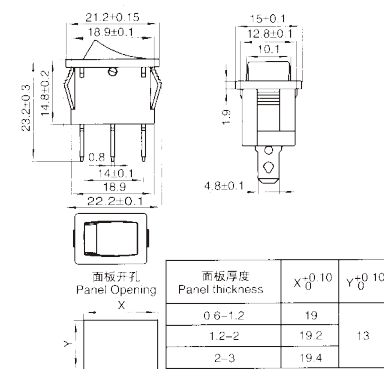
KCD11-101/2P



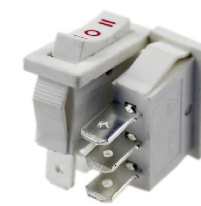
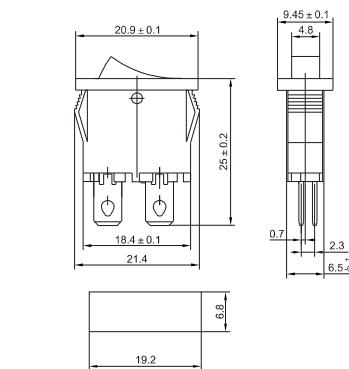
KCD2-101LD



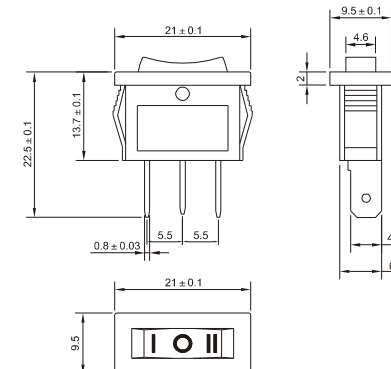
KCD1-103



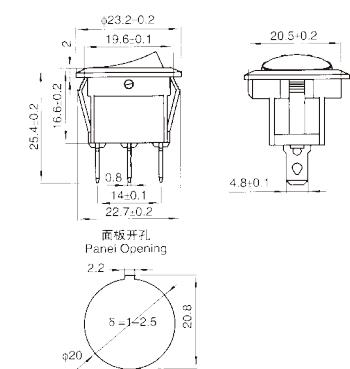
KCD1-101B



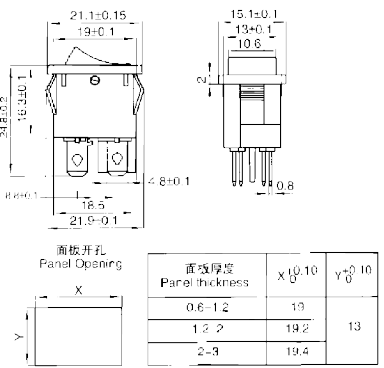
KCD1-103S



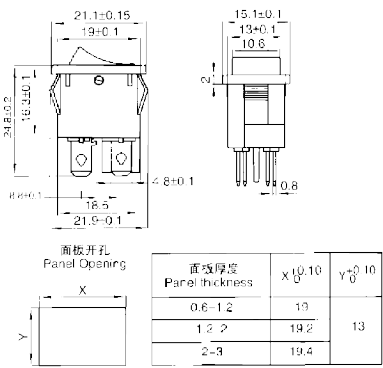
KCD2-101D



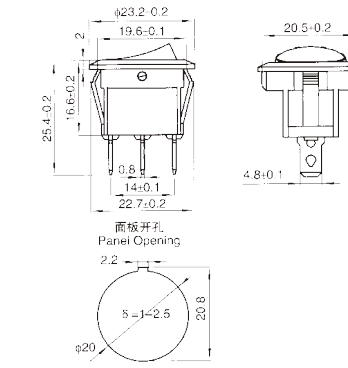
KCD1-201S



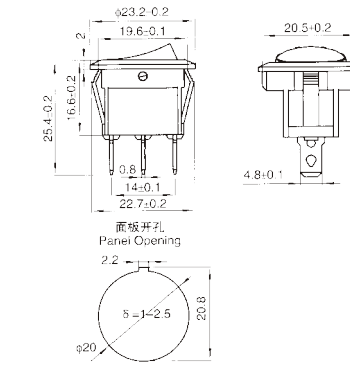
KCD1-201



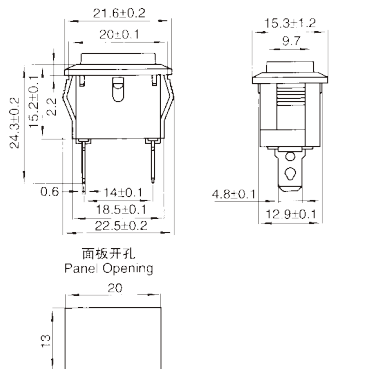
KCD2-101NM/D



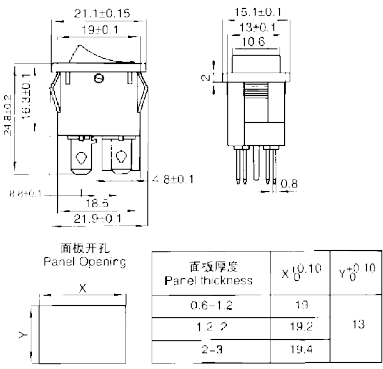
KCD2-103D



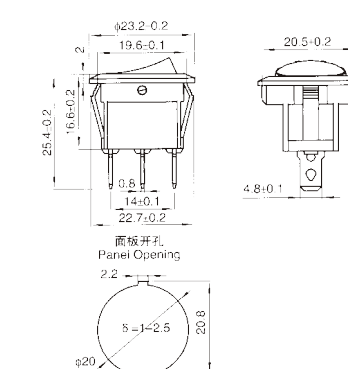
KCD1-102



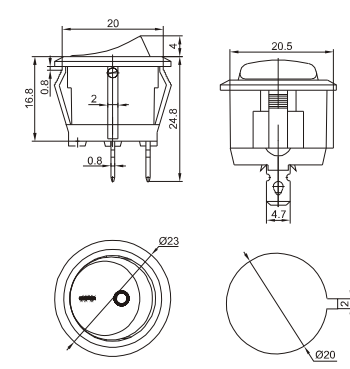
KCD1-201N



KCD2-101ND

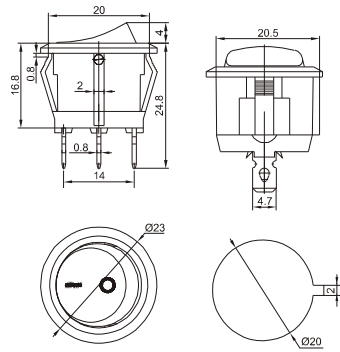


KCD2-101

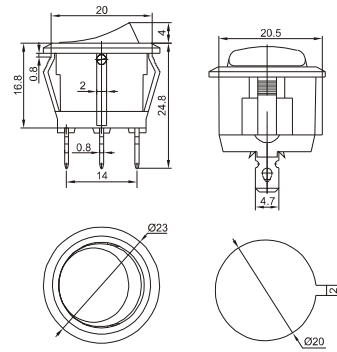




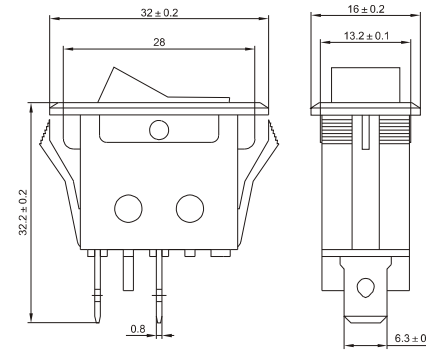
KCD2-101N



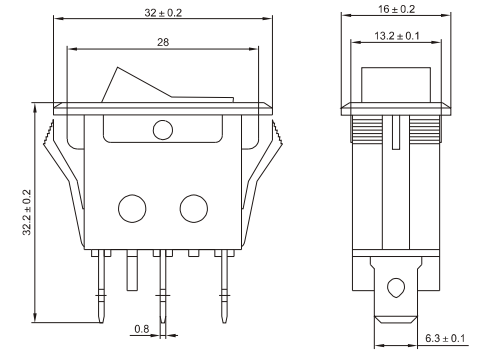
KCD2-103



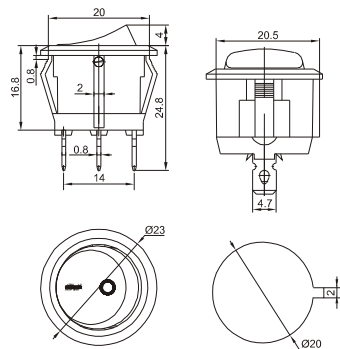
KCD3-101BV



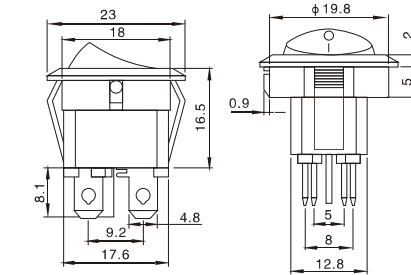
KCD3-101NBV



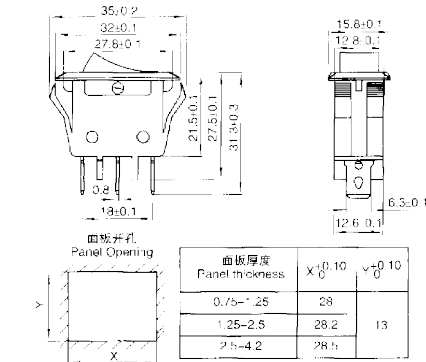
KCD2-101NM



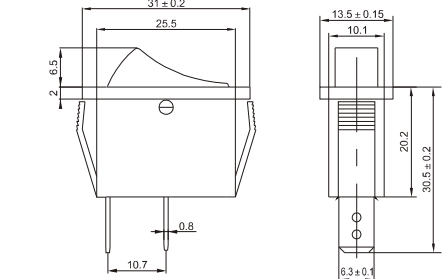
KCD2-201N



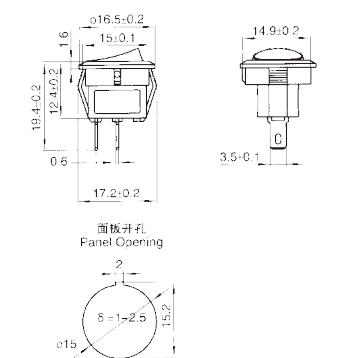
KCD3-101NB



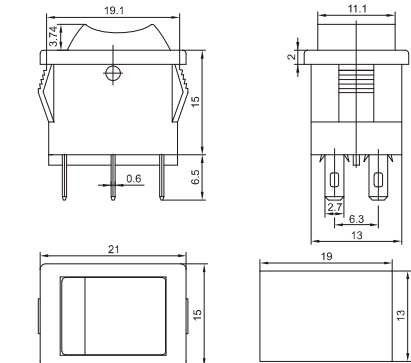
KCD3-101



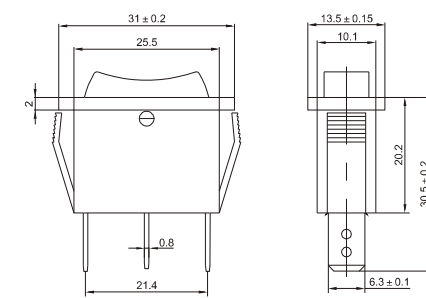
KCD2-101DX



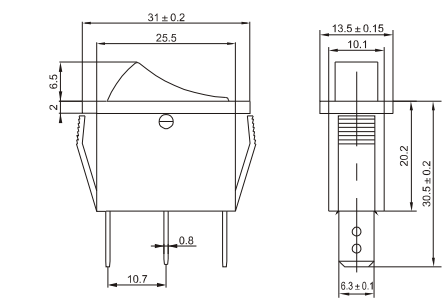
KCD1-202F



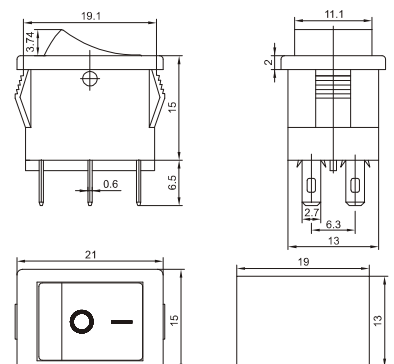
KCD3-103



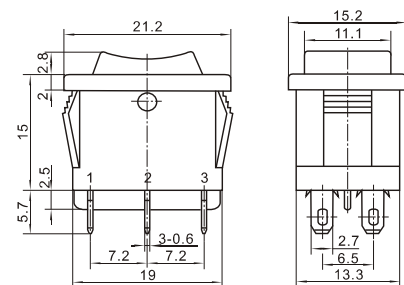
KCD3-101N



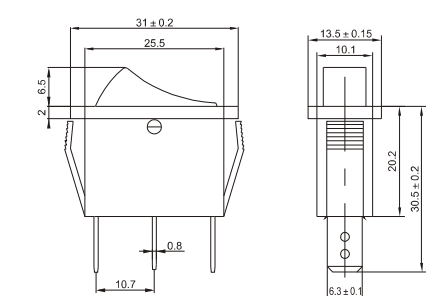
KCD1-202



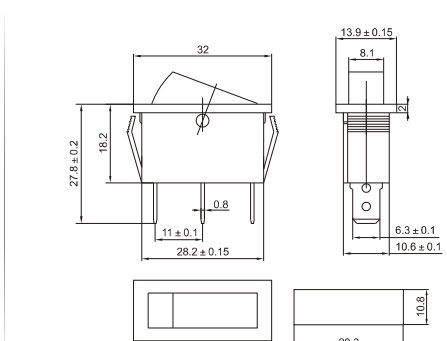
KCD1-203



KCD3-101NM



KCD3-101NP



船型开关系列/Rocker Switches Series

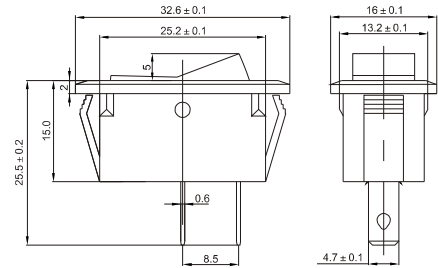
朗正电子

船型开关系列/Rocker Switches Series

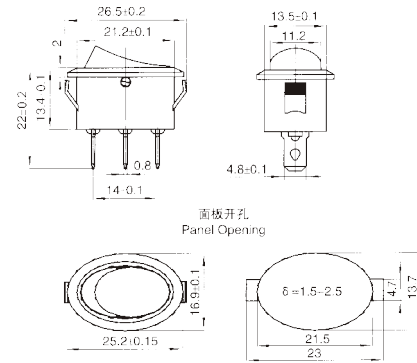
朗正电子



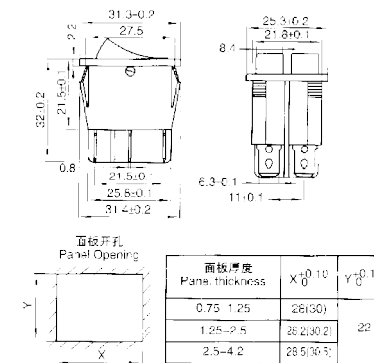
KCD3-101ND



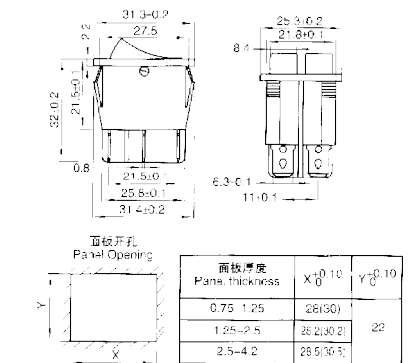
KCD6-103



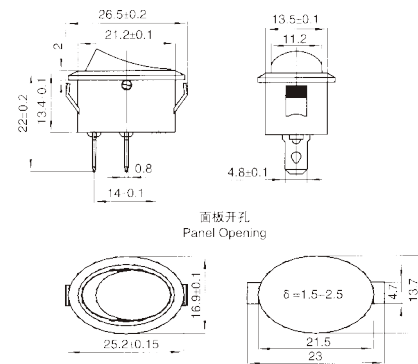
KCD8-101N



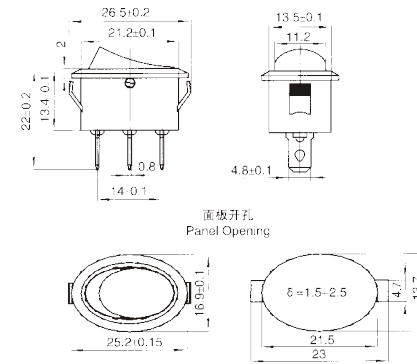
KCD8-201NM



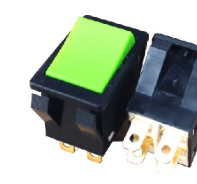
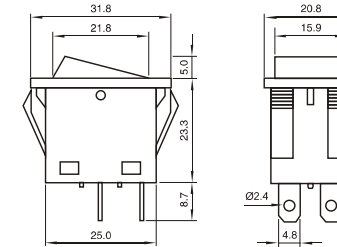
KCD6-101



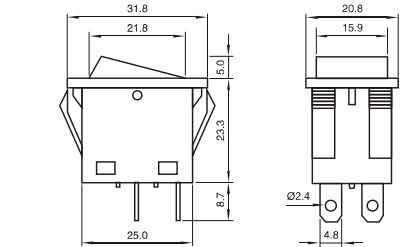
KCD6-101N



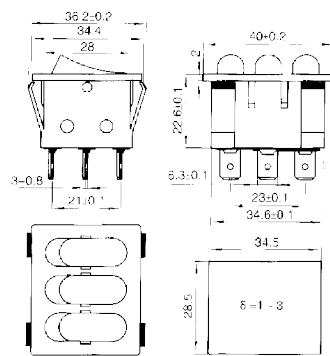
KCD4-201NOK



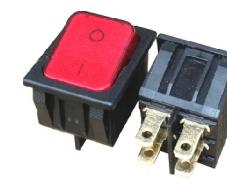
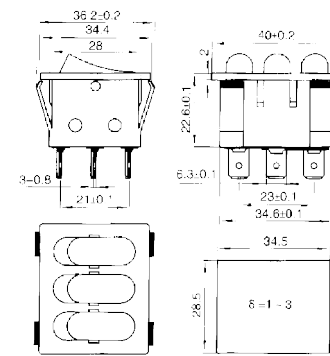
KCD4-201OK



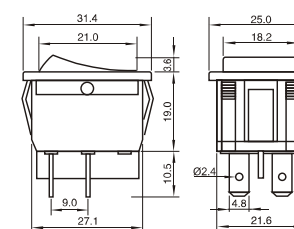
KCD9-301N



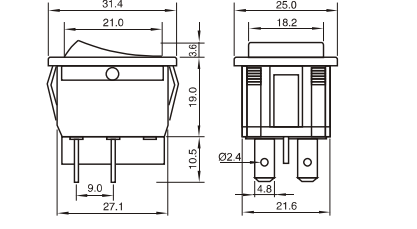
KCD3-302



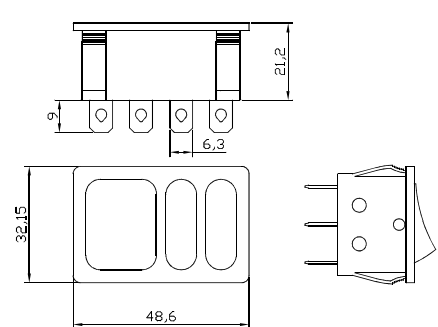
KCD4-201NOE



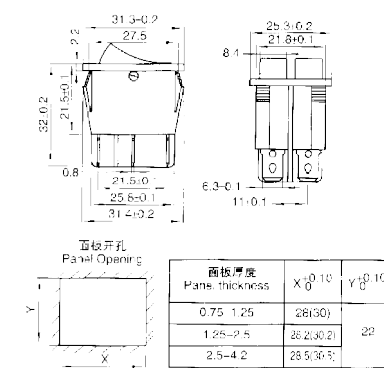
KCD4-201OE



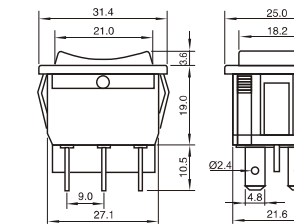
KCD9-301N



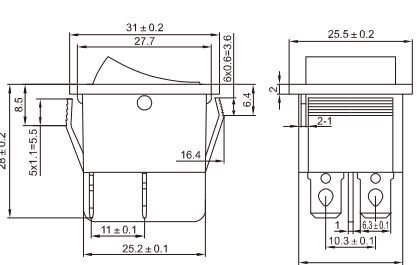
KCD8-101



KCD4-201FOE

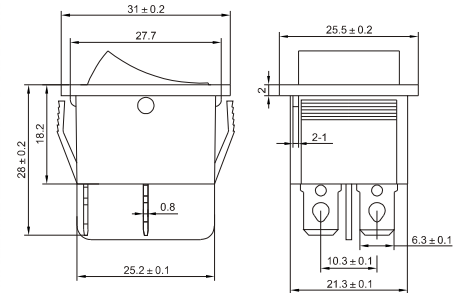


KCD4-201

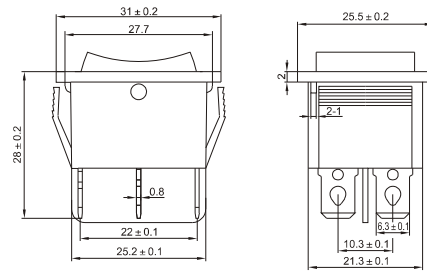




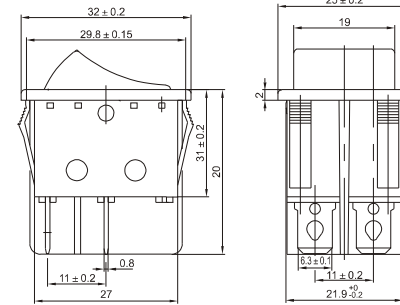
KCD4-201N



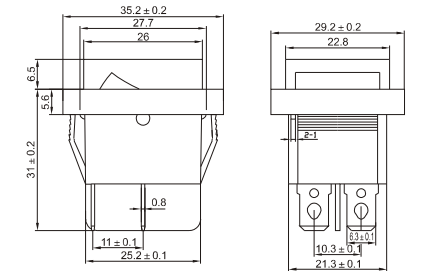
KCD4-203N



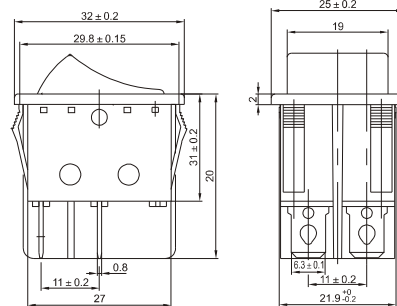
KCD4-201PB



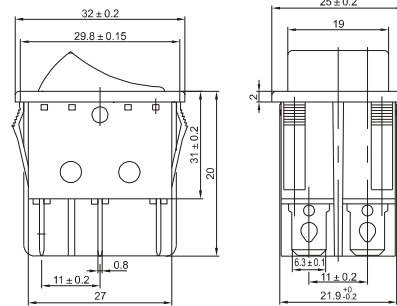
KCD4-201FG



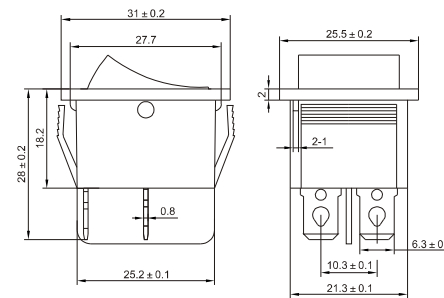
KCD4-201NB-4P



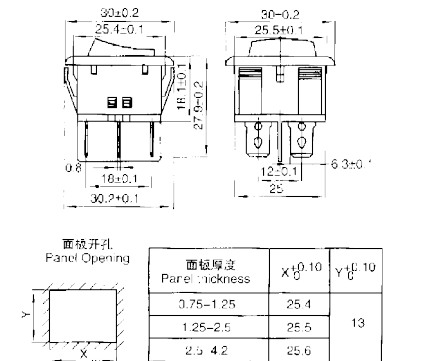
KCD4-201NB-6P



KCD4-201YB



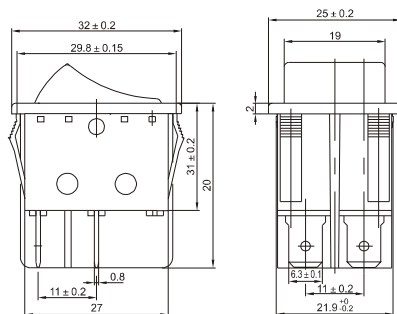
KCD5-203



高电流 (High Current)
20A~30A



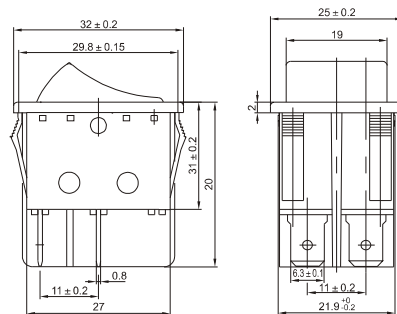
KCD4-201BC



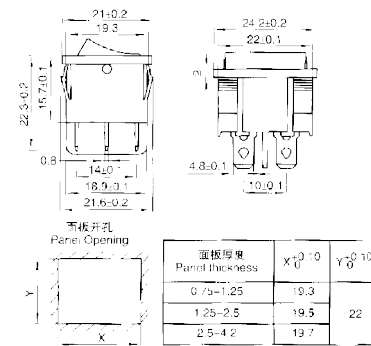
高电流 (High Current)
20A~30A



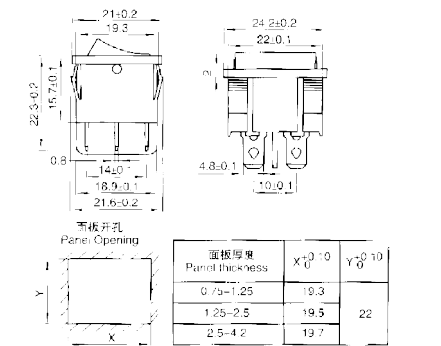
KCD4-201NBC



KCD5-201



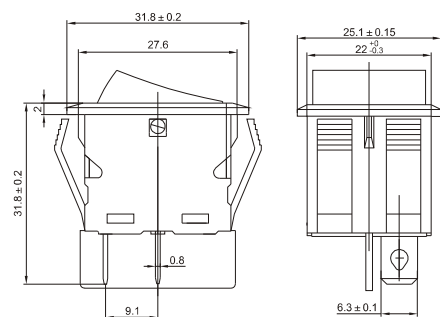
KCD5-201N



防水开关 (Waterproof)



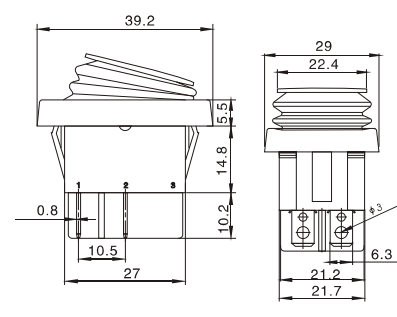
KCD4-201BF



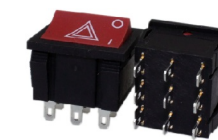
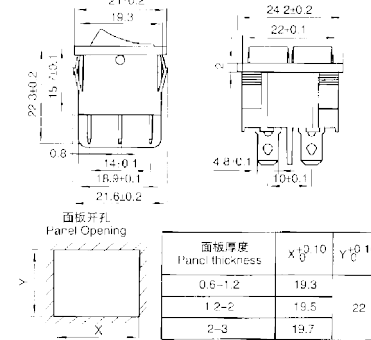
防水开关 (Waterproof)



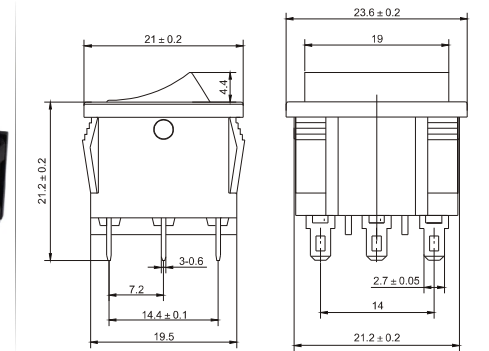
KCD4-201F



KCD5-102B

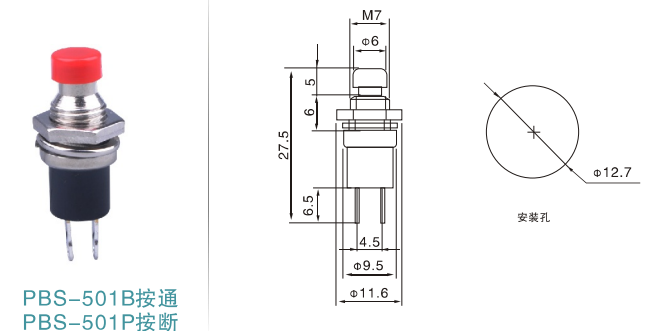
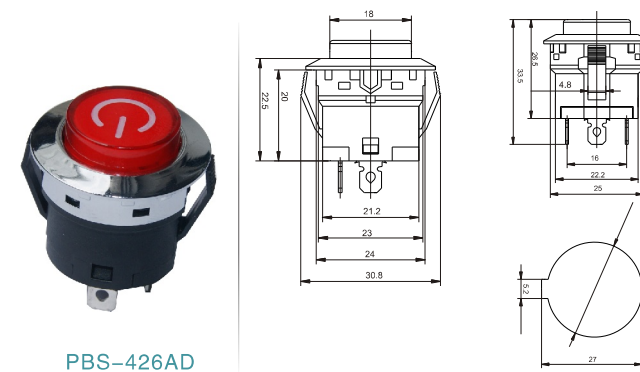
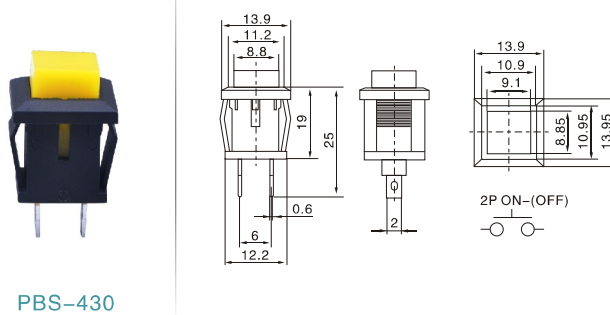
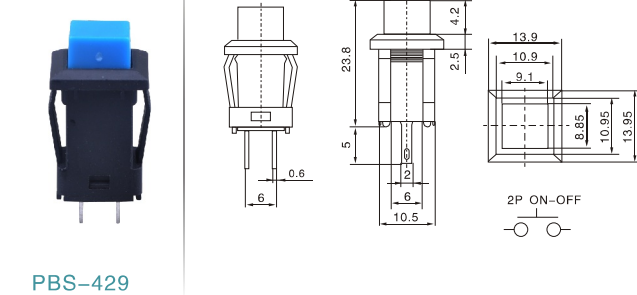
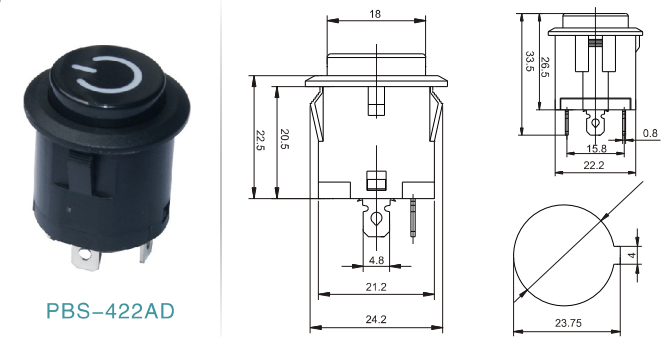
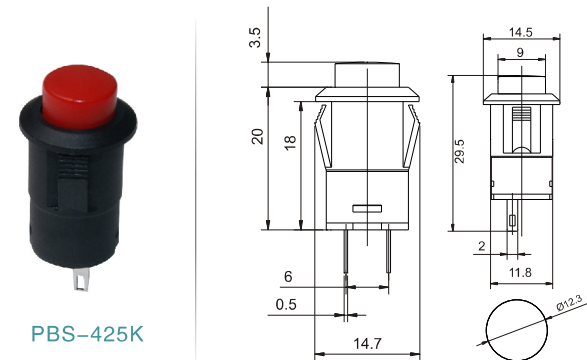
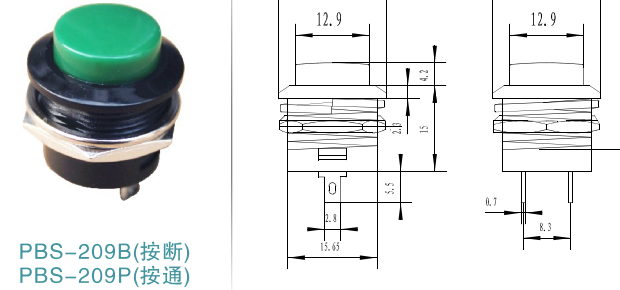
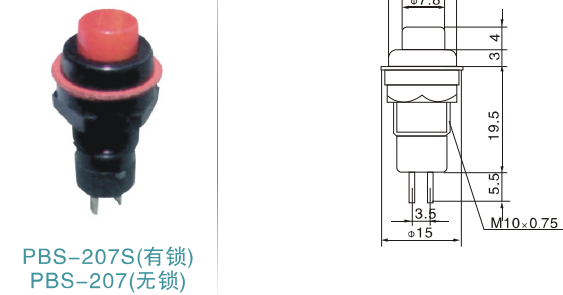
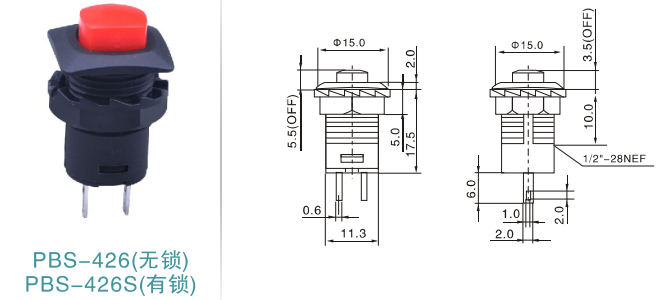
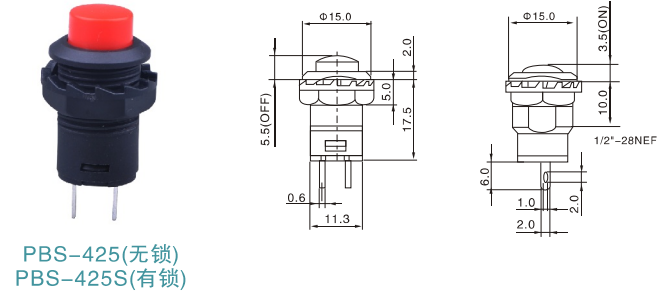
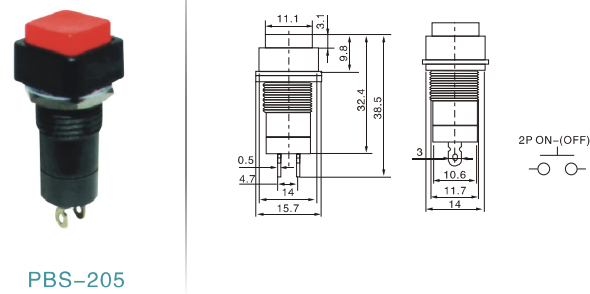
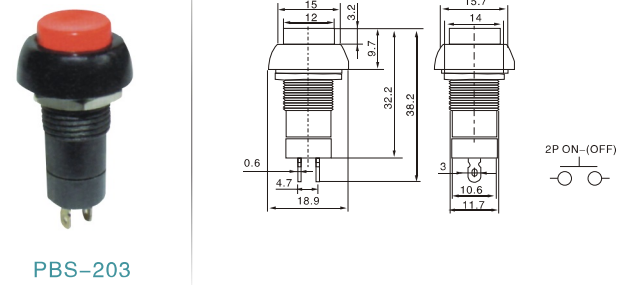


KCD5-303



按钮开关系列主要技术指标 Specification of Push Button Switch Series

温度范围 Temperature	-25~+85℃	绝缘电阻 Insulation Resistance	≥100MΩ
额定电流、电压 Rating	2A 250V AC/4A 125V AC	抗电强度 (Dielectric intensity)	≥1500V AC/min
接触电阻 Contact Resistance	≤50mΩ	电器寿命 Lifespan	10000 times



RELAY SOCKET 继电器插座

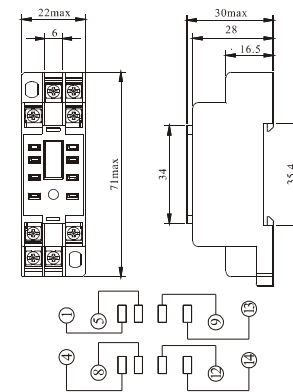
继电器系列/Relay Socket

继电器插座系列主要技术参数 Specification of Relay Socket Series

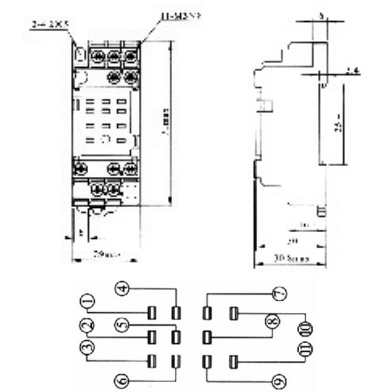
温度范围 Temperature	-40~+65℃	耐压 Withstand Voltage	2000V
额定电流 Rating Current	7A 8A 10A 12A 16A	外连接导线 External Connect Wire	20-14/0.5-2.5AWG
额定电压 Rating Voltage	300V		
螺钉扭矩 Screw Torque	1.0Nm		



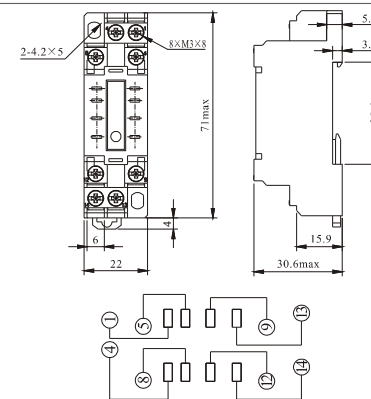
18F-2Z-C1



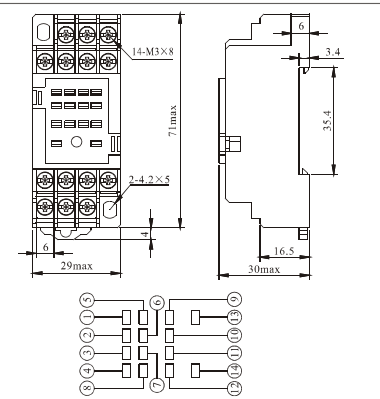
18F-3Z-C2



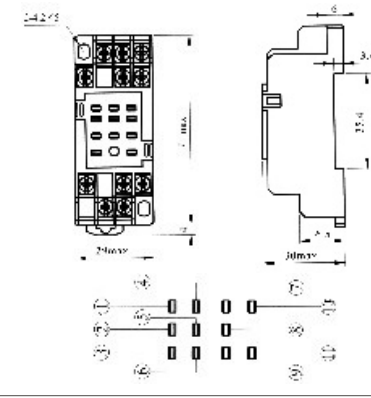
18F-2Z-C2



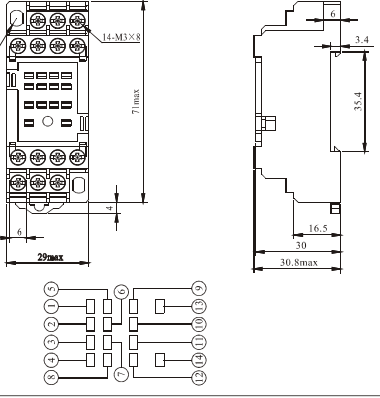
18F-4Z-C1



18F-3Z-C1

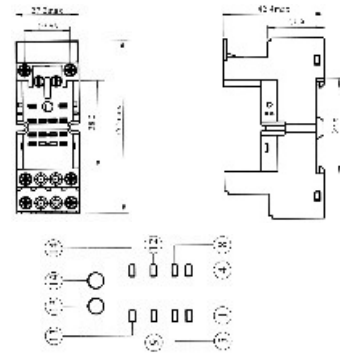


18F-4Z-C2

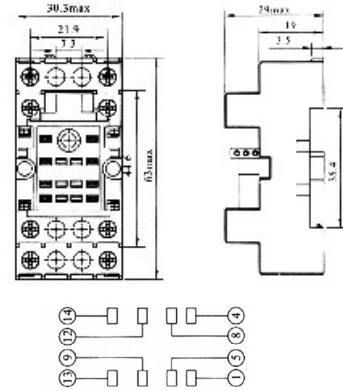




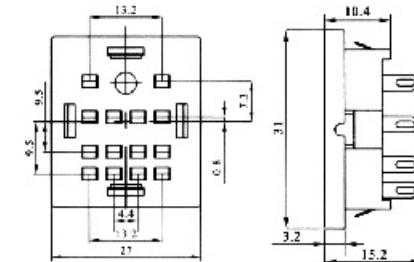
18F-2Z-C4



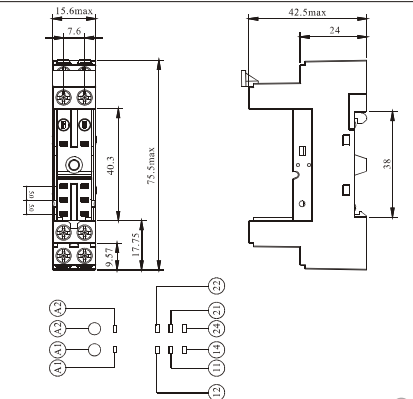
18F-2Z-C7



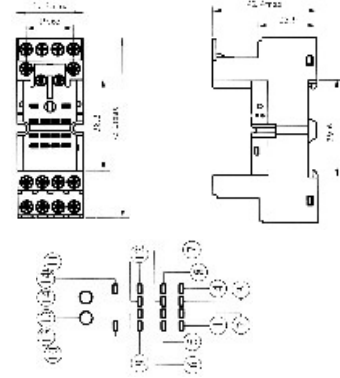
18F-4Z-A



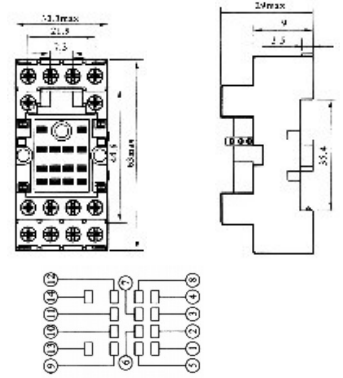
14F-2Z-C2



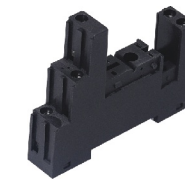
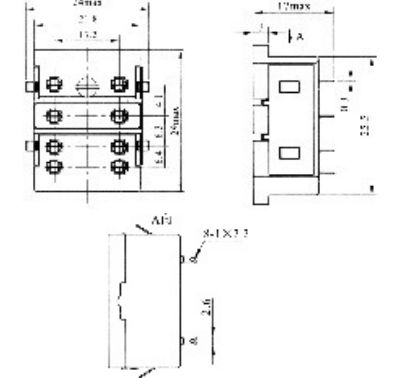
18F-4Z-C4



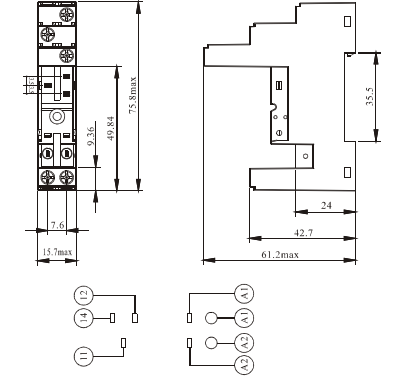
18F-4Z-C7



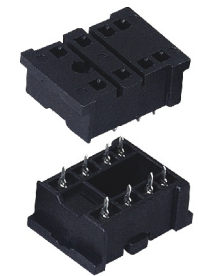
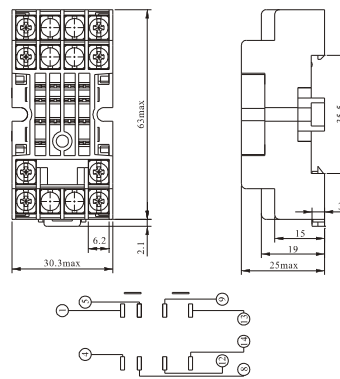
18F-2Z-A1



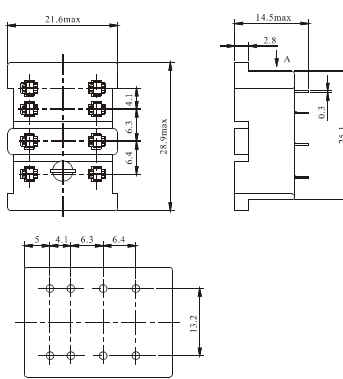
14F-1Z-C3



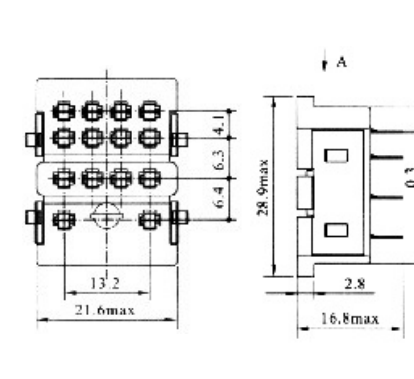
18F-2Z-C6



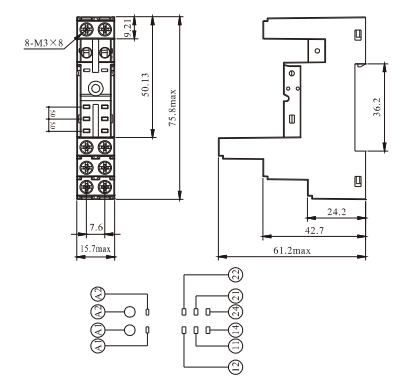
18F-2Z-A2



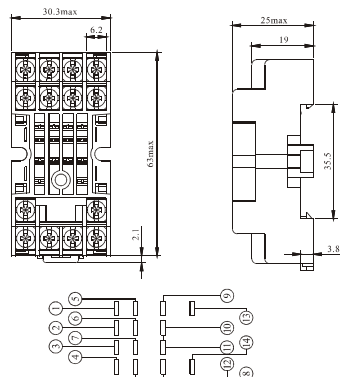
18F-4Z-A1



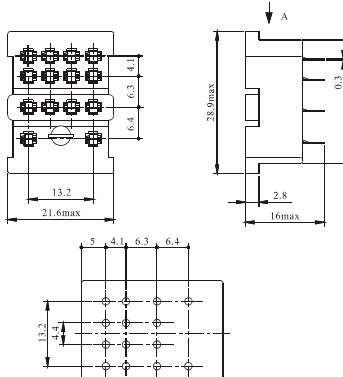
14F-2Z-C3



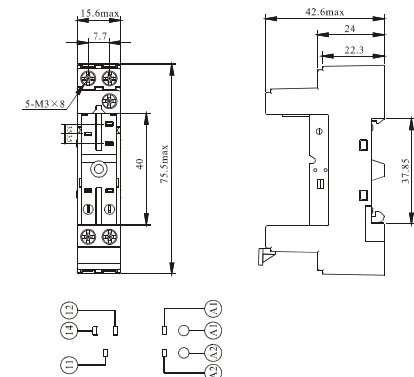
18F-4Z-C6



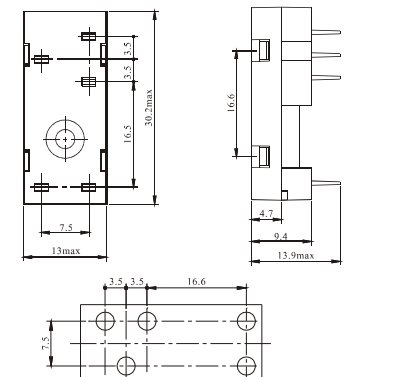
18F-4Z-A2



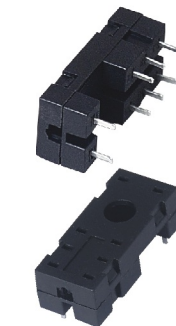
14F-1Z-C2



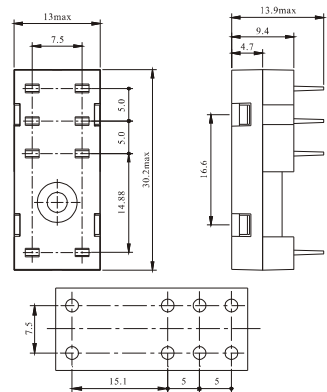
14F-1Z-A1



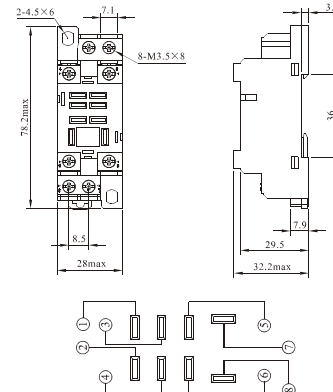
继电器系列/Relay Socket



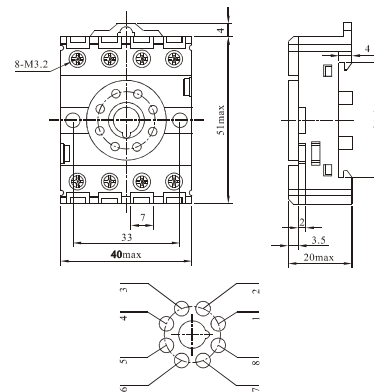
14F-2Z-A1



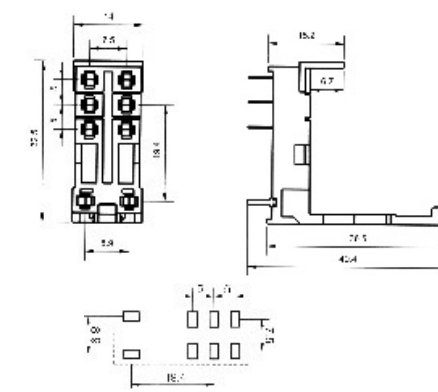
13F-2Z-C2



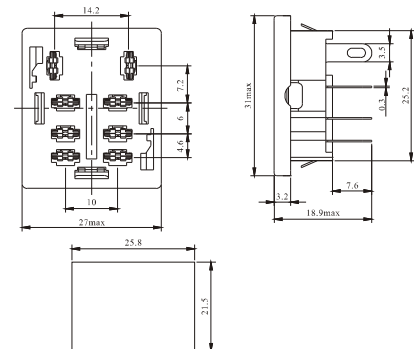
10F-2Z-C2



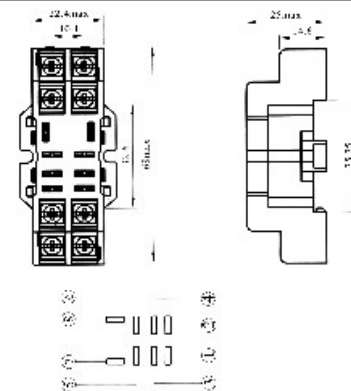
157F-2Z-A1



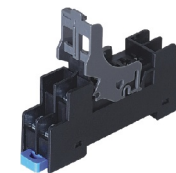
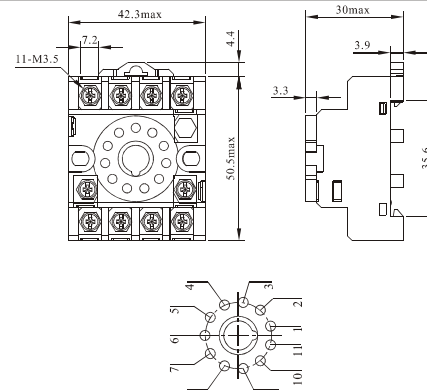
13F-2Z-A



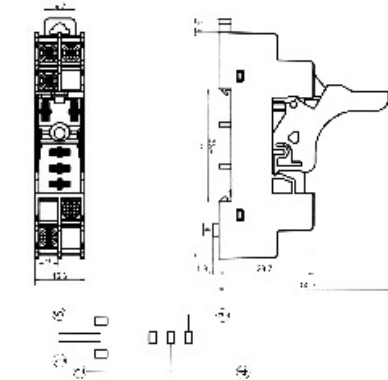
13F-2Z-C3



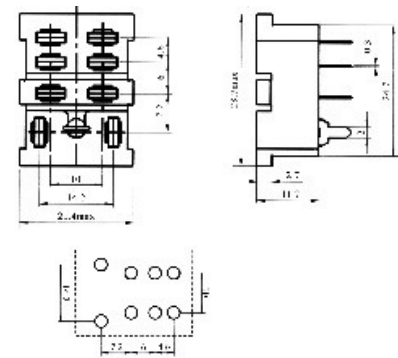
10F-3Z-C1



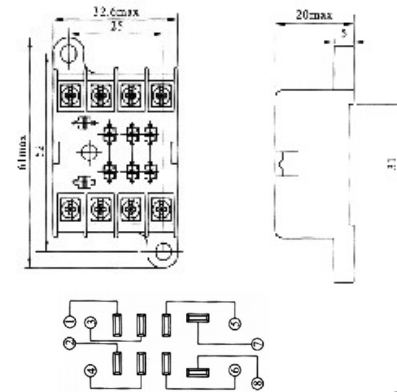
157F-1Z-C1



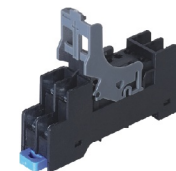
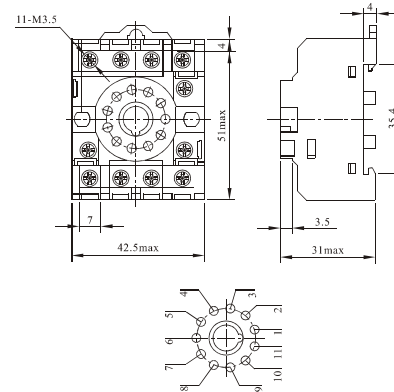
13F-2Z-A2



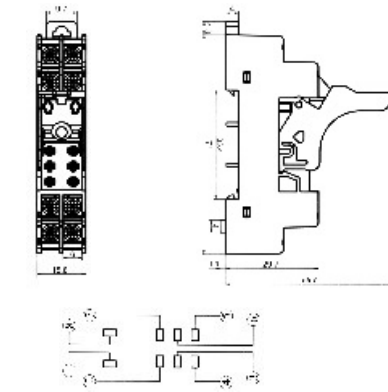
13F-2Z-B



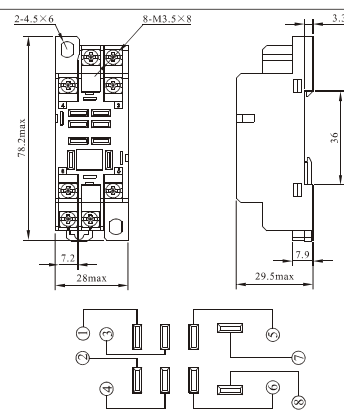
10F-3Z-C2



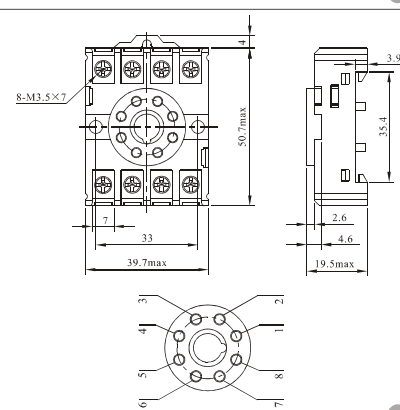
14F-2Z-C3



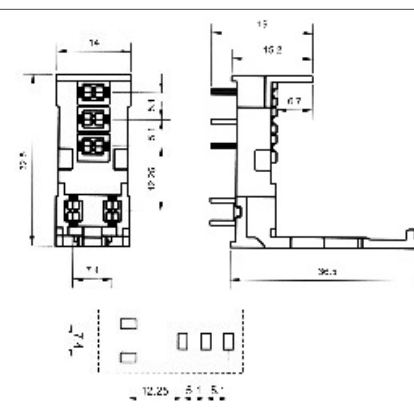
13F-2Z-C1



10F-2Z-C1



157F-1Z-A1



继电器系列/Relay Socket

HH52P-L



HH53P-L



HH62P



HH62P-L



HH64P-L



MK



附件 Accessory

	挂勾型號	配置插座型號
插座挂勾配置	15mm钢勾 15mm(M型)塑料挂勾 20mm钢勾 20mm(M型)塑料挂勾 25mm钢勾 25mm(M型)塑料挂勾	PI-0 (14F-1Z/2Z-A1) 插座
	15mm钢勾 15mm塑料挂勾 20mm钢勾 20mm塑料挂勾 25mm钢勾 25mm塑料挂勾	PI-BE (14F-1Z-C2/C3/C4/C5、14F-2Z-C2/C3/C4/C5) 插座
	29mm钢勾 29mm塑料挂勾 36mm钢勾 36mm塑料挂勾	PYF-BE (18F-2Z/3Z/4Z-C3/C4/C5/C9) 插座
	001扣簧	PY-0 (18F-2Z/3Z/4Z-A1/A2、18F-4Z-A/B) 13F-2Z-A/B 插座
	006卡簧	PYF (18F-2Z/3Z/4Z-C1/C2)、PTF(13F-2Z/3Z/4Z-C1/C2) 插座
	505卡簧	KLY2 (13F-2Z-C3)、KMY4(18F-4Z-C6) 插座
	004卡簧	10F-2Z/3Z-C1/C2 插座
	62mm钢勾、折扣型钢勾	10F-2Z/3Z-C3/C4 插座

型号对照 Contrast

	欧姆龙 OMRON	韩国开控 KACON	台湾国兴 GOODSKY	欧美 DCCIDENT
18F-2Z-A1	PY08	KY08	PY-08	
18F-2Z-A2	PY08-02	KY08-02	PY-08-02	
18F-2Z-C1	PYF08A	KYF08A	PYF-08A	
18F-2Z-C2	PYF08A-E	KYF08AE	PYF-08A-E	ZR08
18F-2Z-C3		KPZ2		
18F-2Z-C4		KPY2	PYF-08BE	ZMI2NA
18F-2Z-C5		KPY22	PYF-08BE/3	ZMI2SA
18F-2Z-C6		KMY2		
18F-2Z-C7		KMY2-E		ZDM11
18F-2Z-C8		KMY2-E1		
18F-2Z-C9		KCY2		ZMI2GA
18F-3Z-A1	PY11	KY11	PY-11	
18F-3Z-A2	PY11-02	KY11-02	PY-11-02	
18F-3Z-C1	PYF11A	KYF11A	PYF-11A	
18F-3Z-C2	PYF11A-E2	KYF11AE	PYF-11AE	
18F-3Z-C4		KPY3		
18F-3Z-C5		KPY31		ZMI3SA
18F-4Z-A				
18F-4Z-A1	PY14	KY14	PY-14	
18F-4Z-A2	PY14-02	KY14-02	PY-14-02	
18F-4Z-B	18F-4Z-B		18F-4Z-B	
18F-4Z-C1	PYF14A	KYF14A	PYF-14A	
18F-4Z-C2	PYF14A-E2	KYF14AE	PYF-14A-E	ZMI3NA
18F-4Z-C3				
18F-4Z-C4		KPY4	PYF-14BE	ZMI4NA
18F-4Z-C5		KPY41	PYF-14BE/3	ZMI4SA
18F-4Z-C6		KMY4		
18F-4Z-C7		KMY4-E	PYF-14AEW	ZDMI4
18F-4Z-C8		KMY4-E1		ZDMI4A
18F-4Z-C9		KCY4		ZMI4GA
14F-1Z-A1		KPX14	PI-35-0	ZH7
14F-1Z-A2	14F-1Z-A2			NEW ZH7
14F-1Z-C1				
14F-1Z-C2		KPX1	PI-35BE	ZD 35/2A
14F-1Z-C3		KPX11	PI-35BE/3	ZD 35/3A
14F-1Z-C4		KPX16		
14F-1Z-C5		KPX17		ZD 35/3GA
14F-2Z-A1		KPX24	PI-50-0	ZH9
14F-2Z-A2	14F-2Z-A2			NEW ZH9
14F-2Z-C1				
14F-2Z-C2		KPX2	PI-05BE	ZD 50/2A
14F-2Z-C3		KPX21	PI-50BE/3	ZD 50/3A
14F-2Z-C4		KPX26		
14F-2Z-C5		KPX27		ZD 50/3GA
13F-2Z-A	13F-2Z-A		13F-2Z-A	
13F-2Z-A1	PT08-0	KT08	PT-08	
13F-2Z-A2	PT08-02	KT08-2	PT-08-0	
13F-2Z-B	13F-2Z-B		13F-2Z-B	
13F-2Z-C1	PTF08A	KTF08A	PTF-08A	ZPY08C
13F-2Z-C2	PTF08A-E2	KTF08AE	PTF-08AE	
13F-2Z-C3		KLY2		
13F-2Z-C4		KLY4		
13F-4Z-C1		KTF14A		
10F-2Z-A		K2BF08	PF-083A	
10F-2Z-C1	PF083A	KF083A	PF-083AE	
10F-2Z-C2	PF083A-E	KF083AE	PT-083BE	ZPD 8N
10F-2Z-C3		KPZ2		ZPD 8A
10F-2Z-C4		KPZ2/M	PF-113A	ZPD 9A
10F-2Z-C5		KPZ21		ZPD 8XA
10F-3Z-A				
10F-3Z-C1	PF113A	KF113A	PF-113A-E	
10F-3Z-C2	PF113A-E	KF113AE	PF-113AE	ZPD 11N
10F-3Z-C3		KPZ3	PF-113BE	ZPD 11A
10F-3Z-C4		KPZ3/M		ZPD 12A
10F-3Z-C5		KPZ31		ZPD 11XA
160F-3Z-C1		KRF3		
53F-2Z-C1	P2CF08	K2CF08		
53F-3Z-C1	P2CF11	K2CF11		

Power Cords

- America UL power cords
- Australian SAA power cords
- Europe VDE power cords
- UK ASTA BSI 1363 A power cords
- Indonesia SNI power cords
- Korean KSC power cords
- Japan PSE JET power cords
- China CCC power cords
- Italy IMQ power cords
- South Africa power cords
- Swiss SEV power cords
- Argentina IRAM power cords
- Israel approved power cords
- Brazil UC Inmetro AC Power cord
- Denmark standards power cord
- Saudi SASO power cords



电源线系列/POWER CORD SERIES

朗正电子



Y010

PLUG:Y010

TYPE CABLE	SEC.MM ²	MEET STANDARD:
H03VV-F	3G 0.75	PVC PLUG Y010 TYPE 2P+E;
H05VV-F	3G 0.75-1.0	10A/250V
H03RT-H	3G 0.75-1.0	ACCORDING TO IRAM2063:1982
H05RR-F	3G 0.75-1.0	IRAM2006:1983
H05RN-F	3G 0.75-1.0	



SZ3(QZ3)

PLUG:SZ3(QZ3)

TYPE CABLE	SEC.MM ²	MEET STANDARD:
H03VV-F	3G 0.75	PVC PLUG SZ3 TYPE 2P+E;
H05VV-F	3G 1.0-1.5	10A/250V FOR COLD APPLICATIONS
SJT	3X 14-18AWG.	ACCORDING TO
SVT.SVT(SHIELD)	3X 14AWG.	SPECIFICATION UL817 AWD EN60320
SJT(SHIELD)	3X 14-18AWG.	
RVV	3X0.75-1.5	



D06A

PLUG:D06A

TYPE CABLE	SEC.MM ²	MEET STANDARD:
H05VV-F	3X0.75-1.0-1.5	PVC PLUG D06A TYPE 2P+E
H05RR-F	3X0.75-1.0	10A/250V FOR 1.0MM ²
4V-75 250/440V	3X0.75-1.5	SPECIFICATION AS/NZ 3120-1999
		AS/NZS 3112:2000



JL-10

PLUG:JL-10

TYPE CABLE	SEC.MM ²	MEET STANDARD:
H05VV-F	3G 0.75-1.0	PVC PLUG JL-10 TYPE 2P+E;
H05RR-F	3G 0.75-1.0	10A/250V
H05RN-F	3G 0.75-1.0	PIN ϕ 4.4



Y002-F(D02-F)

PLUG:Y002-F(D02-F)

TYPE CABLE	SEC.MM ²
H05RR-F	2X0.75-1.0-1.5
H05RN-F	2X0.75-1.0
H07RN-F	2X1.0-1.5

MEET STANDARD:
PVC PLUG Y002-F TYPE 2P;
IP44 16A/250V
ACCORDING TO TEC 60884-1
PIN ϕ 4.8



YY-3(JJ-3)

PLUG:YY-3(JJ-3)

TYPE CABLE	SEC.MM ²
SVT(SHIELD)	3X17-18AWG.
SJT	3X12-18AWG.
SPT-2	3X16-18AWG.
SPT-3	3X16-18AWG.
SJTO	3X14-18AWG.
SJTW	3X12-18AWG.
SJTOW	3X18-14AWG.
S.SO.SOO.SJ	3X18-16AWG.

MEET STANDARD:
PVC PLUG YY-3 TYPE 2P+E;
10-15A/125V
ACCORDING TO NEMA5-15P
UL 817 AND CSA C.22.2 NO.21-95



K03

PLUG:K03

TYPE CABLE	SEC.MM ²
H03VV-F	3X0.75
H05VV-F	3X0.75-1.8
H05RR-F	3X0.75-1.0
H05RN-F	3X0.75-1.0
H03RT-H	3X0.75-1.0

MEET STANDARD:
PVC PLUG K03 TYPE 2P+E;
16A/250V F
ACCORDING TO KSC 8305
PIN ϕ 4.8



PBB-6(JJ-6)

PLUG:PBB-6(JJ-6)

TYPE CABLE	SEC.MM ²
60227 IEC 53(RVV)	2X0.75-1.0
60227 IEC 52(RVV)	2X0.5-0.75

MEET STANDARD:
PVC PLUG PBB-6 TYPE 2P;
6-10A/250V
ACCORDING TO CCEE
GB2099.1-2008 GB1002-2008



K04

PLUG:K04

TYPE CABLE	SEC.MM ²
H03VV-F	3X0.75
H05VV-F	3X0.75-1.5
H05RR-F	3X0.75-1.0
H05RN-F	3X0.75-1.5
H03RT-H	3X0.75-1.0

MEET STANDARD:
PVC PLUG K04 TYPE 2P+E;
16A/250V F
ACCORDING TO KSC 8305
PIN ϕ 4.8



Y001-K(K01)

PLUG:Y001-K(K01)

TYPE CABLE	SEC.MM ²
H03VV-F	2X0.5-0.75
H03VVH2-F	2X0.5-0.75
H05VV-F	2X0.75-1.0
H05VVH2-F	2X0.75-1.0

MEET STANDARD:
PVC PLUG Y001-K TYPE 2P;
2.5A/250V F
ACCORDING TO KSC 8305
PIN ϕ 4.8



Y006

PLUG:Y006

TYPE CABLE	SEC.MM ²
H03VV-F	2-3X0.75
H05VV-F	2-3X0.75-1.0-1.5
H05RR-F	2-3X0.75-1.0-1.5
H05RN-F	2-3X0.75-1.0
H03VVH2-F	2X0.75
H05VVH2-F	2X0.75-1.0
H03RT-H	2-3X0.75-1.0

MEET STANDARD:
PLUG Y006 TYPE 2P+E;
WITH FUSE 3-13A/250V
ACCORDING TO UK SPECIFICATION
BS 1363



YY-2A(JJ-2A)

PLUG:YY-2A(JJ-2A)

TYPE CABLE	SEC.MM ²
SVT	2X16-18AWG.
SJT	2X16-18AWG.
SJTO	2X16-18AWG.
SJTOW	2X14-18AWG.

MEET STANDARD:
PVC PLUG YY-2A TYPE 2P;
10-15A/125V
ACCORDING TO NEMA1-15P
UL 817 AND CSA C.22.2 NO.21-95



YY-2(JJ-2)

PLUG:YY-2(JJ-2)		MEET STANDARD: PVC PLUG YY-2 TYPE 2P; 2-15A/125V ACCORDING TO NEMA1-15P UL 817 AND CSA C.22.2 NO.21-95
TYPE CABLE	SEC.MM ²	
SPT-1	2X18AWG.	
SPT-2	2X16-18AWG.	
HPN	2X16-18AWG.	
SPT-1W	2X18AWG.	
SPT-2W	2X16-18AWG.	
NISPT-1	2X18-20AWG.	
NISPT-2	2X16-18AWG.	



ST3(QT3)

PLUG:ST3(QT3)		MEET STANDARD: PVC PLUG ST3 TYPE 2P+E; 10A/250V ACCORDING TO UI817 CSA C22.2 N.495 CEE(22) V.AND JIS C3306.C8303,AND A.S.3112-1981 FIG2.1(a)
TYPE CABLE	SEC.MM ²	
H03VV-F	3G 0.75-1.0	
H05VV-F	3G 0.75-1.0	
SVT.WVT(SHIELD)	3X18AWG.	
SJT(SHIELD)	3X16-18AWG.	
SJT	3X14-18AWG.	
VCTF	3X0.75-1.25-2.0	
HVCTF	3X0.75-1.25-2.0	



ST1

PLUG:ST1		MEET STANDARD: PVC CONNECTOR LA023A TYPE 2P+E; 2.5A/250V
TYPE CABLE	SEC.MM ²	
SVT(SHIELD)	3C 18AWG.60°C 105°C	
SVT.SJT	3C 18AWG.60°C 105°C	
SPT-1	3C 18AWG.60°C 105°C	
SPT-2	3C 18AWG.60°C 105°C	
H05W-F	3C0.75	
H03W-F	3C0.75	



YY-3Z

PLUG:YY-3Z		MEET STANDARD: PVC CONNECTOR YY-3Z TYPE 2P+E;13A/15A/125V ACCORDING TO UL817.AND CSA C22.2 NO.21-95
TYPE CABLE	SEC.MM ²	
SJT	3X16-18AWG.	
SVT	3X18AWG.	



ST2

PLUG:ST2		MEET STANDARD: PVC CONNECTOR ST2 2.5A/250V
TYPE CABLE	SEC.MM ²	
H03VVH2-F	2X0.5-0.75	
H05VVH2-F	2X0.75-1.0	
SPT-1	18AMX2C	



Y003-ZB

PLUG:Y003-ZB		MEET STANDARD: PVC PLUG Y003-ZB TYPE 2P+E; 16A/250V
TYPE CABLE	SEC.MM ²	
H05VV-F	3G 1.0-1.5	



ST3(QT3)

PLUG:ST3(QT3)		MEET STANDARD: PVC CONNECTOR ST3 TYPE 2P; 10A/250V ACCORDING TO UL817 CSA C22.2 N.42 CEE(22)V.AND JIS C3306. C8303,AND A.S.3112-1981 FIG.2.1(A)
TYPE CABLE	SEC.MM ²	
H03VV-F	3G 0.75	
H05VV-F	3G 0.75-1.0	
WW05VAS-F	3X0.75	
SVT	3X 18AWG.	
SVT(SHIELD)	3X 18AWG.	
SJT(SHIELD)	3X 16-18AWG.	
SJT	3X 14-18AWG.	
VCTF	3X0.75-1.25-2.0	
HVCTF	3X0.75-1.25-2.0	

PLUG:XH009A		PVC CONNECTOR XX-104 15A/125V-250V ACCORDING TO UI817 AND CSA C22.2 NO.21-90
TYPE CABLE	SEC.MM ²	
H05VV-F	3G 1.0-1.5	
SJT	3X16-12AWG	
ST	3X16-12AWG	



www.lanzmfg.com

PLUG:LA010E		MEET STANDARD PVC CONNECTOR LA010E TYPE 2P;16A/250V ACCORDING TO IEC320 C19.EN60320 Fc19
TYPE CABLE	SEC.MM ²	
SJT	3X18-12AWG.	
SJT	3X18-12AWG.	
SJTO	3X18-12AWG.	



www.lanzmfg.com