



InterElcom Sp. z o.o.

NIP: 898218586 Regon: 021451864

T: +48 71 780 78 36 | T: +48 71 780 78 37

www.interelcom.com | info@interelcom.com



DATA CONNECTORS

PRODUCT CATALOG



We specialize in sales and delivery of electronic components

One of our core values is building long-term relationships with our clients

InterElcom has been operating in the Polish market since 2011, but its core consists of individuals with many years of experience in trading electronic components and devices in Poland, European, and Asian markets, as well as extensive expertise in modern electronic technologies. At the heart of our company lies the desire to simplify and streamline the entire electronics trading process so that customers can quickly and affordably obtain products that meet their needs.

We are a company focused on dynamic growth, and our mission is to ensure that the quality of our services always remains at the highest level. Our suppliers highly value their cooperation with us, and our customers point to our reliable service, trustworthy information, and extensive technical support. This is exactly what matters to us - to be close to the customer and to serve them with our technical and commercial expertise in a friendly atmosphere. An expression of their trust in us is a series of distribution agreements with InterElcom.

TYPE-C Series

Type-C refers to standards, interfaces, or connectors that comply with "USB Type-C". Commonly used in the field of smart devices such as smartphones, tablets, laptops, and desktop computers, Type-C is one of the many standards that uses interfaces and connectors to match each other. Some common uses of Type-C interface: 1. Charging and data transmission; 2. Display connection; 3. Digital audio transmission; 4. Connect the mouse and keyboard; 5. Game device connection; 6. Communication equipment connection; The Type-C interface has many uses and can be used on various devices, making it a very useful digital interface.



TYPE-C 24PIN
DIP + SMT TYPE



TYPE-C 24PIN



TYPE-C 16PIN



TYPE-C 16PIN



TYPE-C 16PIN



TYPE-C 6PIN
90



TYPE-C 4.0 24PIN
SMT CH=-1.4



TYPE-C 24PIN
SMT



TYPE-C 24PIN
SMT Gen2



TYPE-C 24PIN
SMT



TYPE-C 24PIN
SMT



TYPE-C 16PIN
SMT



TYPE-C 24PIN
CH=3.4



TYPE-C 24PIN
90



TYPE-C 24PIN



TYPE-C 24PIN
SMT



TYPE-C 24PIN



TYPE-C 24PIN
SMT

USB Series

USB is used for connecting and communicating computers with external devices, as well as for charging mobile phones and connecting to external devices. Simply put, it is used for transmitting data and charging. According to different interfaces and data cables, USB supports devices such as mice, keyboards, printers, scanners, cameras, flash drives, MP3 players, mobile phones, digital cameras, mobile hard drives, external optical and floppy drives, USB network cards, ADSL modems, Cable modems, and other electronic products.



USB 3.2 Gen 2



USB3.1 TYPE GEN1



USB 3.1 DIP



USB 3.0



USB 3.0 DIP



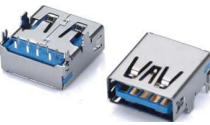
USB3.0 90



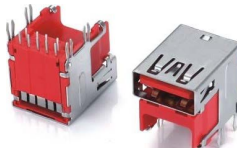
USB 3.0



USB3.0 DIP180



USB3.0 DIP 90



USB3.0 90



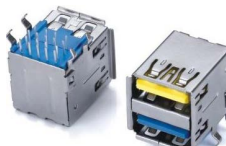
USB 3.0 SMT



USB 3.0 90



USB3.0 SMT



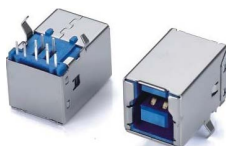
USB3.0



USB2.0 SMT



USB3.0 B 180 H=5.0



USB 3.0 B



USB2.0 A TYPE



USB2.0 B 180



USB2.0 B



USB 2.0 A 90



MINI USB 5P SMT



MICRO B TYPE (7.00*5.00)



MICRO AB TYPE 180

HDMI & DP Series

HDMI generally refers to high-definition video interfaces, which are currently used in devices such as set-top boxes, televisions, laptops, game consoles, integrated amplifiers, digital audio systems, monitors, and home theaters. HDMI is a digital video/audio interface technology that can simultaneously transmit audio and video signals. The DP interface can be simply understood as an enhanced version of HDMI, making it more powerful in audio and video transmission.



HDMI A 2.1 TYPE



HDMI SMT 9.50



HDMI SMT



HDMI DIP



HDMI DIP



HDMI DIP



HDMI SMT



HDMI C TYPE 3.30 Mylar



HDMI



HDMI DIP 2.30mm



DP 180 SMT 3.0



DP SMT



DP 90 SMT



DP 90 SMT 3.0



DP + HDMI DIP



RJ45 Series

✓

RJ45 interface is a standardized interface type widely used in the field of computer networks. It can connect devices such as computers, routers, switches, modems, etc. It has the advantages of high-speed transmission, ease of use, and good compatibility, achieving data transmission and network communication.





RJ45 2X4 4KV



RJ45 1X2 DIP



RJ45



RJ45 LED 21.75



RJ45 2X1 4KV



RJ45 + HDMI H22.50



RJ45



RJ45 90



RJ45



RJ45 MIN LED H=4.70



RJ45



SFP 2X1 90

DC POWER JACK Series

DC power jack is a type of power interface used to connect power devices such as laptops, televisions, electronic clocks, cameras, audio systems, toys, etc. Its characteristics are large contact area, good stability, and the ability to transmit large amounts of current. At the same time, it also has safety protection functions such as anti misinsertion and anti reverse insertion. It has the advantages of convenient connection, simple use, and reliable contact, and is an indispensable power connector in modern life.



DC POWER JACK
DIP 7.0



DC POWER JACK
90



DC POWER JACK
DIP 5.0



DC POWER JACK SMT



DC POWER JACK



DC POWER JACK
180 4.10



DC POWER JACK
180



DC POWER JACK



DC POWER JACK



DC POWER JACK
180 PCB



DC POWER JACK
180



DC POWER JACK
180



DC POWER JACK
PIN 7.80mm



DC POWER JACK
180



DC POWER JACK



DC POWER JACK
180



DC POWER JACK
SMT



DC POWER JACK
90



"Space", from the series for InterElcom, denim, own technique, 2023
painted by Mariusz Mikotajek